

STILL MAKIN' IT IN THE USA



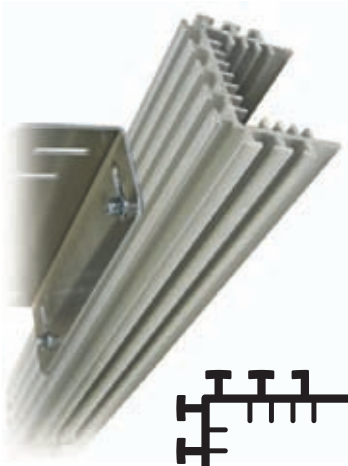
Flex-a-lite®

Performance • Cooling • Products

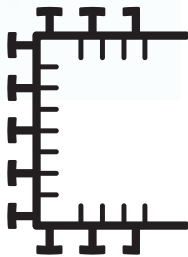


Aluminum Radiators

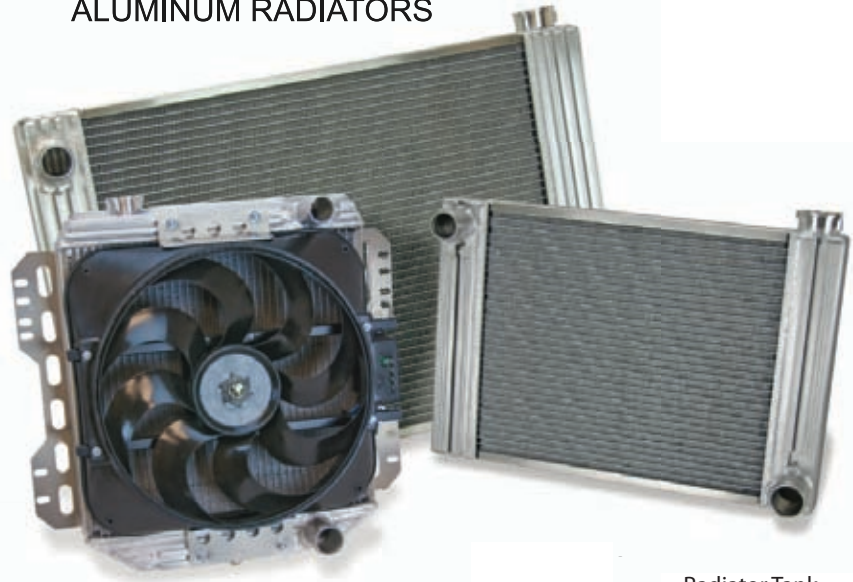
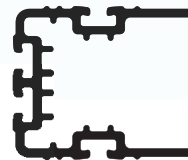
Flex-a-Fit[®] ALUMINUM RADIATORS



Standard Profile



Slim Profile



A patented T-channel feature on all **Flex-a-fit**[®] radiator tanks permit brackets to be attached almost anywhere on the radiator, making the installation quick, strong and reliable.

- Filler neck & cap add 1 $\frac{3}{4}$ "-2"; inlet & outlet tubes extend 2.5" from tank
- **Flex-a-fit**[®] tanks are designed to enhance the cooling capacity of the radiator by incorporating heat dissipating fins on the inside AND the outside
- Radiators ship with universal adjustable mounting brackets
- Available with Left or Right inlet
- All-aluminum 2-row construction with 1"/26mm radiator core tubes
- All-aluminum **Slim Profile** 2-row construction with $\frac{1}{2}$ " radiator core tubes
- Finned tanks increase radiant surfaces by 300%
- T-channel design simplifies accessory mounting

ATTENTION: Radiator cap must be purchased separately... and if you have an Automatic Transmission, you will need a cooler

How to choose a Radiator

Choosing the right radiator

1. Determine the overall dimensions of the radiator your vehicle was originally equipped with by using the following application guide dimension to the right.

2. Compare these dimensions to the overall dimensions listed for Flex-a-Fit® radiators. Select a Flex-a-Fit® radiator that is similar to the size of your original radiator. Note: If the Flex-a-Fit® radiator you select is larger than your original radiator, hood clearance may be affected, and modifications to the core support or other vehicle components may be required for mounting.

The inlet tube of your vehicles, radiator is normally located at the top and it is typically 1¼" - 1½" in diameter. If the inlet tube is located on the right (passenger) side, this is a "right inlet" radiator, and a "left inlet" if on the left (driver) side.

The radiator's outlet tube is normally located at the bottom, and typically appears on the side opposite the inlet tube. Outlet tubes are usually 1½" - 1¾" in diameter (usually larger than the inlet).

Radiator part numbers must be followed by R or L to designate right inlet or left inlet. Example: Part number 56000L is a left inlet, 26" core crossflow radiator.

PART#	INLET	DESCRIPTION	OVERALL DIMS
Standard Profile			
50064	Right	17¾" Core 64-66 Mustang w/V8 Rad Only	19¾ x 20¾ x 3¾
50067	Right	17¾" Core 67-69 Mustang w/V8 Rad Only	22¾ x 20¾ x 3¾
50164	Right	17¾" Core 64-66 Mustang w/V8 w/ #160 Fan	19¾ x 20¾ x 7
50167	Right	17¾" Core 67-69 Mustang w/V8 w/ #160 Fan	22¾ x 20¾ x 7
51000L	Left	17" Core Radiator Only	22½ x 18½ x 3¾
51000R	Right	17" Core Radiator Only	22½ x 18½ x 3¾
51000TL	Left	18" Core Radiator Only	18½ x 22½ x 3¾
51000TR	Right	18" Core Radiator Only	18½ x 22½ x 3¾
51008	Left	17" Core Radiator Only GM V8 Conversion	22½ x 18½ x 3¾
51009	Right	17" Core Radiator Only Ford V8 Conversion	22½ x 18½ x 3¾
51118L	Left	17" Core w/ #118 Fan	22½ x 18½ x 7
51118R	Right	17" Core w/ #118 Fan	22½ x 18½ x 7
51160L	Left	17" Core w/ #160 Fan	22½ x 18½ x 7
51160R	Right	17" Core w/ #160 Fan	22½ x 18½ x 7
51160TL	Top Left	18" Core Downflow with #160 Fan	18½ x 22½ x 7
51160TR	Top Right	18" Core Downflow with #160 Fan	18½ x 22½ x 7
51168	Left	17" Core w/ #160 Fan GM V8 Conversion	22½ x 18½ x 7
51169	Right	17" Core w/ #160 Fan Ford V8 Conversion	22½ x 18½ x 7
52000L	Left	22" Core Radiator Only	27¾ x 18½ x 3¾
52000R	Right	22" Core Radiator Only	27¾ x 18½ x 3¾
52000TL	Top Left	18" Core Downflow Radiator Only	18½ x 27¾ x 3¾
52000TR	Top Right	18" Core Downflow Radiator Only	18½ x 27¾ x 3¾
52100	Right	22" Core Radiator Only - 79-93 Mustang 5.0	27¾ x 18½ x 3¾
52180L	Left	22" Core w/ #180 Fan	27¾ x 18½ x 7
52180R	Right	22" Core w/ #180 Fan	27¾ x 18½ x 7
52180TL	Top Left	18" Core Downflow with #180 Fan	18½ x 27¾ x 7
52180TR	Top Right	18" Core Downflow with #180 Fan	18½ x 27¾ x 7
52185	Right	22" Core w/ #185 Fan - 79-93 Mustang 5.0	27¾ x 18½ x 7
52007	Left	22" Core Radiator Only - 67-69 Camaro	27¾ x 18½ x 3¾
52187	Left	22" Core w/ #180 Fan - 67-69 Camaro	27¾ x 18½ x 7
55000L	Left	26" Core Radiator Only	31¾ x 12½ x 3¾

PART#	INLET	DESCRIPTION	OVERALL DIMS
55000R	Right	26" Core Radiator Only	31¾ x 12½ x 3¾
55330L	Left	26" Core w/ #330 Fan	31¾ x 12½ x 7
55330R	Right	26" Core w/ #330 Fan	31¾ x 12½ x 7
56000L	Left	26" Core Radiator Only	31¾ x 18½ x 3¾
56000R	Right	26" Core Radiator Only	31¾ x 18½ x 3¾
56400	Left	26" Core Radiator Only - 82-92 Camaro	31¾ x 18½ x 3¾
56410L	Left	26" Core w/ #410 Fan	31¾ x 18½ x 5¾
56410R	Right	26" Core w/ #410 Fan	31¾ x 18½ x 5¾
56412L	Left	26" Core w/ #412 Fan	31¾ x 18½ x 5¾
56412R	Right	26" Core w/ #412 Fan	31¾ x 18½ x 5¾
56480L	Left	26" Core Radiator/Fan -Universal w/ #480Fan	31¾ x 18½ x 7
56480R	Right	26" Core Radiator/Fan -Universal w/ #480Fan	31¾ x 18½ x 7
56484	Left	26" Core Radiator/Fan - 82-92 Camaro	31¾ x 18½ x 7
57000L	Left	32½" Core Radiator Only	38 x 18½ x 3¾
57000R	Right	32½" Core Radiator Only	38 x 18½ x 3¾
57294L	Left	32½" Core w/ #294 Fan	38 x 18½ x 7¼"
57294R	Right	32½" Core w/ #294 Fan	38 x 18½ x 7¼"
58000L	Left	28" Core Radiator Only	33¾ x 18½ x 3¾
58000R	Right	28" Core Radiator Only	33¾ x 18½ x 3¾
58295L	Left	28" Core w/ #295 Fan	33¾ x 18½ x 7½
58295R	Right	28" Core w/ #295 Fan	33¾ x 18½ x 7½
Slim Profile			
60087	Right	17" Core Radiator Only-87-06 Jeep Wrangler	22¾ x 18¾ x 2¼
60187	Right	17" Core w/ #160 Fan - 87-06 Jeep Wrangler	22¾ x 18¾ x 5¾
61000L	Left	17" Core Radiator Only	22¾ x 18¾ x 2¼
61000R	Right	17" Core Radiator Only	22¾ x 18¾ x 2¼
61160L	Left	17" Core Radiator w/ #160 Fan	22¾ x 18¾ x 5¾
61160R	Right	17" Core Radiator w/ #160 Fan	22¾ x 18¾ x 5¾
62000L	Left	22" Core Radiator Only	27 x 18¾ x 2¼
62000R	Right	22" Core Radiator Only	27 x 18¾ x 2¼
62180L	Left	22" Core Radiator w/ #180 Fan	27 x 18¾ x 5¾
62180R	Right	22" Core Radiator w/ #180 Fan	27 x 18¾ x 5¾
63000L	Left	15½" Core Radiator Only	20¾ x 14½ x 2¼
63000R	Right	15½" Core Radiator Only	20¾ x 14½ x 2¼
63111L	Left	15½" Core Radiator w/ #111 Fan	20¾ x 14½ x 5¾
63111R	Right	15½" Core Radiator w/ #111 Fan	20¾ x 14½ x 5¾
63113L	Left	15½" Core Radiator w/ #111 Fan w/VSC	20¾ x 14½ x 5¾
63113R	Right	15½" Core Radiator w/ #111 Fan w/VSC	20¾ x 14½ x 5¾
63115L	Left	15½" Core Radiator w/ #115 Fan	20¾ x 14½ x 5¾
63115R	Right	15½" Core Radiator w/ #115 Fan	20¾ x 14½ x 5¾
63000AUL	Left	15½" Core Rad Only w/1¼" Inlets/Outlets	20¾ x 14½ x 2¼
63000AUR	Right	15½" Core Rad Only w/1¼" Inlets/Outlets	20¾ x 14½ x 2¼
63115AUL	Left	15½" Core Rad w/#115 + 1¼" Inlets/Outlets	20¾ x 14½ x 5¾
63115AUR	Right	15½" Core Rad w/#115 + 1¼" Inlets/Outlets	20¾ x 14½ x 5¾
66000L	Left	26½" Core Radiator Only	31¾ x 18¾ x 2¼
66000R	Right	26½" Core Radiator Only	31¾ x 18¾ x 2¼
66412L	Left	26½" Core Radiator w/ #412 Fan	31¾ x 18¾ x 4½
66412R	Right	26½" Core Radiator w/ #412 Fan	31¾ x 18¾ x 4½
66480L	Left	26½" Core Radiator w/ #480 Fan	31¾ x 18¾ x 5¾
66480R	Right	26½" Core Radiator w/ #480 Fan	31¾ x 18¾ x 5¾

Flex-a-fit® Radiator/Fan Combos



Ford Mustang

- Fits 64-66 Ford Mustang with V8 engine
- O.E. radiator mounting points
- O.E. Brackets are included
- 2 Row 1" tubes



Ford Mustang

- Fits 64-66 Ford Mustang with V8 engine
- O.E. radiator mounting points
- O.E. Brackets are included
- Reversible - blades *
- Manual switch connection
- Fan is factory mounted
- Adj. thermostat, A/C Relay
- 2 Row 1" tubes

Part# 50064 64-66 Mustang radiator

Dims	19 ⁵ / ₈ " x 20 ⁵ / ₈ " x 3 ³ / ₄ "
Core Dims	17 ³ / ₈ " x 16 ³ / ₈ " x 2 ¹ / ₄ "
inlet/outlet	1 ¹ / ₂ " inlet x 1 ³ / ₄ " outlet x 2 ¹ / ₂ " long
inlet location	passenger side

Part# 50164 64-66 Mustang rad w/ 160 fan

Dims	19 ⁵ / ₈ " x 20 ⁵ / ₈ " x 7"
Fan Part#	160
Amp Draw	19.5
Air Flow	3,000 cfm
Controls	Adj. Thermostat, A/C Relay
inlet/outlet	1 ¹ / ₂ " inlet x 1 ³ / ₄ " outlet x 2 ¹ / ₂ " long



Ford Mustang

- Fits 67-69 Ford Mustang with V8 engine
- O.E. radiator mounting points
- O.E. Brackets are included
- 2 Row 1" tubes



Ford Mustang

- Fits 67-69 Ford Mustang with V8 engine
- O.E. radiator mounting points
- O.E. Brackets are included
- Reversible - blades *
- Manual switch connection
- Fan is factory mounted
- Adj. thermostat, A/C Relay
- 2 Row 1" tubes

Part# 50067 67-69 Mustang radiator

Dims	22 ⁵ / ₈ " x 20 ⁵ / ₈ " x 3 ³ / ₄ "
Core Dims	17 ³ / ₈ " x 16 ³ / ₈ " x 2 ¹ / ₄ "
inlet/outlet	1 ¹ / ₂ " inlet x 1 ³ / ₄ " outlet x 2 ¹ / ₂ " long
inlet location	passenger side

Part# 50167 67-69 Mustang rad w/ 160 fan

Dims	22 ⁵ / ₈ " x 20 ⁵ / ₈ " x 7"
Fan Part#	160
Amp Draw	19.5
Air Flow	3,000 cfm
Controls	Adj. Thermostat, A/C Relay
inlet/outlet	1 ¹ / ₂ " inlet x 1 ³ / ₄ " outlet x 2 ¹ / ₂ " long



Universal Fit

- 17" core
- Radiator only
- "L" Brackets are included
- 2 Row 1" tubes



Universal Fit

- 17" core
- Radiator / Fan combo
- Puller Fan
- Fan is factory mounted
- "L" Brackets are included
- Adj. thermostat, A/C Relay
- 2 Row 1" tubes

Part# 51000 radiator only

Dims	22 ¹ / ₂ " x 18 ¹ / ₂ " x 3 ³ / ₄ "
Core Dims	17" x 18" x 2 ¹ / ₄ "
inlet/outlet	1 ¹ / ₂ " inlet x 1 ³ / ₄ " outlet x 2 ¹ / ₂ " long
inlet location	51000R = passenger 51000L = driver

Part# 51118 radiator w/ 118 fan

Dims	22 ¹ / ₂ " x 18 ¹ / ₂ " x 7"
Fan Part#	118
Amp Draw	18.5
Air Flow	2500 cfm
Controls	none
inlet/outlet	1 ¹ / ₂ " inlet x 1 ³ / ₄ " outlet x 2 ¹ / ₂ " long

Flex-a-fit[®] Radiator/Fan Combos



Universal Fit

- Downflow Radiator
- 18" core
- Radiator only
- Fits many early Ford & Dodge applications with downflow radiators
- "L" Brackets are included
- 2 Row 1" tubes



Universal Fit

- 18" core
- Radiator / Fan combo
- Puller Fan
- Fans factory mounted
- "L" Brackets are included
- Adj. thermostat, A/C Relay
- 2 Row 1" tubes

Part# 51000T downflow radiator only	
Dims	18½" x 22½" x 3¾"
Core Dims	18" x 17" x 2¼"
inlet/outlet	1½" inlet x 1¾" outlet x 2½" long
inlet location	51000TR = passenger / 51000TL = driver

Part# 51118T downflow radiator w/ 118 fan	
Dims	18½" x 22½" x 7"
Fan Part#	118
Amp Draw	18.5
Air Flow	2500 cfm
Controls	none
inlet/outlet	1½" inlet x 1¾" outlet x 2½" long



Universal Fit

- 17" core
- Radiator only
- "L" Brackets are included
- 2 Row 1" tubes



Universal Fit

- 17" core
- Radiator / Fan combo
- Reversible - blades *
- Manual switch connection
- Fans factory mounted
- "L" Brackets are included
- Adj. thermostat, A/C Relay
- 2 Row 1" tubes

Part# 51000 radiator only	
Dims	22½" x 18½" x 3¾"
Core Dims	17" x 18" x 2¼"
inlet/outlet	1½" inlet x 1¾" outlet x 2½" long
inlet location	51000R = passenger / 51000L = driver

Part# 51160 radiator w/ 160 fan	
Dims	22½" x 18½" x 7"
Fan Part#	160
Amp Draw	19.5
Air Flow	3000 cfm
Controls	Adj. thermostat, A/C relay
inlet location	51160R = passenger / 51160L = driver
inlet/outlet	1½" inlet x 1¾" outlet x 2½" long



Universal Fit

- Downflow Radiator
- 18" core
- Radiator only
- Fits many early Ford & Dodge applications with down flow radiators
- "L" Brackets are included
- 2 Row 1" tubes



Universal Fit

- Downflow Radiator
- 18" core
- Radiator / Fan combo
- Reversible - blades *
- Manual switch connection
- Fans factory mounted
- "L" Brackets are included
- Adj. thermostat, A/C Relay
- 2 Row 1" tubes

Part# 51000T downflow radiator only	
Dims	18½" x 22½" x 3¾"
Core Dims	18" x 17" x 2¼"
inlet/outlet	1½" inlet x 1¾" outlet x 2½" long
inlet location	51000TR = passenger / 51000TL = driver

Part# 51160T downflow radiator w/ 160 fan	
Dims	18½" x 22½" x 7"
Fan Part#	160
Amp Draw	19.5
Air Flow	3000 cfm
Controls	Adj. thermostat, A/C relay
inlet location	51160TR = passenger / 51160TL = driver
inlet/outlet	1½" inlet x 1¾" outlet x 2½" long

Flex-a-fit® Radiator/Fan Combos



Jeep CJ

- 72-86 Jeep CJ
- 17" core
- Radiator only
- Brackets are included
- 2 Row 1" tubes



Jeep CJ

- 72-86 Jeep CJ
- 17" core
- Radiator / Fan combo
- Reversible - blades *
- Fan is factory mounted
- Brackets are included
- Adj. thermostat, A/C Relay
- 2 Row 1" tubes

Part# 51008, 51009 radiator only	
Dims	22½" x 18½" x 3¾"
Core Dims	17" x 18" x 2¼"
inlet/outlet	1½" inlet x 1¾" outlet x 2½" long
GM inlet location	51008 = LH inlet GM V8 Conversion
Ford inlet location	51009 = RH inlet Stock or Ford V8 Conversion

Part# 51168, 51169 72-86 Jeep CJ	
Dims	22½" x 18½" x 7"
Fan Part#	160
Amp Draw	19.5
Air Flow	3000 cfm
Controls	Adj. thermostat, A/C relay
GM inlet location	51168 = LH inlet GM V8 Conversion
Ford inlet location	51169 = RH inlet Stock or Ford V8 Conversion
inlet/outlet	1½" inlet x 1¾" outlet x 2½" long



Universal Fit

- 22" core
- Radiator only
- "L" Brackets are included
- 2 Row 1" tubes



Universal Fit

- 22" core
- Radiator / Fan combo
- Reversible - blades *
- Uses Part# 52000
- Fan is factory mounted
- "L" Brackets are included
- Adj. thermostat, A/C Relay
- 2 Row 1" tubes

Part# 52000 radiator only	
Dims	27¾" x 18½" x 3¾"
Core Dims	22" x 18" x 2¼"
inlet/outlet	1½" inlet x 1¾" outlet x 2½" long
inlet location	52000R = passenger / 52000L = driver

Part# 52180 radiator w/ 180 fan	
Dims	27¾" x 18½" x 7"
Fan Part#	180
Amp Draw	18
Air Flow	3300 cfm
Controls	Adj. thermostat, A/C relay
inlet location	52180R = passenger / 52180L = driver
inlet/outlet	1½" inlet x 1¾" outlet x 2½" long



Universal Fit

- Downflow Radiator
- 18" core
- Radiator only
- "L" Brackets are included
- 2 Row 1" tubes



Universal Fit

- Downflow Radiator
- 18" core
- Radiator / Fan combo
- Reversible - blades *
- Uses Part# 52000T
- Fan is factory mounted
- "L" Brackets are included
- Adj. thermostat, A/C Relay
- 2 Row 1" tubes

Part# 52000T downflow radiator only	
Dims	18½" x 27¾" x 3¾"
Core Dims	18" x 22" x 2¼"
inlet/outlet	1½" inlet x 1¾" outlet x 2½" long
inlet location	52000TR = passenger / 52000TL = driver

Part# 52180T downflow radiator w/ 180 fan	
Dims	18½" x 27¾" x 7"
Fan Part#	180
Amp Draw	18
Air Flow	3300 cfm
Controls	Adj. thermostat, A/C relay
inlet location	52180TR = passenger / 52180TL = driver
inlet/outlet	1½" inlet x 1¾" outlet x 2½" long

* Reversible blades can be inverted and the motor wires can be reversed for use as a puller or pusher fan

Flex-a-fit[®] Radiator/Fan Combos



Ford Mustang 5.0

- Fits 79-93 Mustang 5.0
- O.E. radiator mounting points
- O.E. Brackets are included
- Radiator only
- Includes overflow tank
- 2 Row 1" tubes



Ford Mustang 5.0

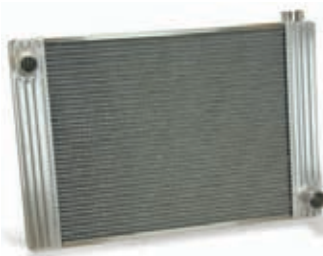
- Fits 79-93 Mustang 5.0
- O.E. radiator mounting points
- O.E. Brackets are included
- Radiator / Fan combo
- Reversible - blades *
- Fan is factory mounted
- Includes overflow tank
- Adj. thermostat, A/C Relay
- 2 Row 1" tubes

Part# 52100 79-93 Mustang radiator

Dims	27 ³ / ₄ " x 18 ¹ / ₂ " x 3 ³ / ₄ "
Core Dims	22" x 18" x 2 ¹ / ₄ "
inlet/outlet	1 ¹ / ₄ " inlet x 1 ³ / ₄ " outlet x 2 ¹ / ₂ " long
inlet location	passenger side

Part# 52185 79-93 Mustang rad w/ 180 fan

Dims	27 ³ / ₄ " x 18 ¹ / ₂ " x 7"
Fan Part#	185
Amp Draw	18
Air Flow	3300 cfm
Controls	Adj. thermostat, A/C relay
inlet location	passenger side
inlet/outlet	1 ¹ / ₄ " inlet x 1 ³ / ₄ " outlet x 2 ¹ / ₂ " long



67-69 Camaro

- Fits 67-69 Camaro and 67-69 Pontiac Firebird
- O.E. radiator mounting points
- O.E. Brackets are included
- Radiator only
- 2 Row 1" tubes



67-69 Camaro

- Fits 67-69 Camaro and 67-69 Pontiac Firebird
- O.E. Brackets are included
- Radiator / Fan combo
- Reversible - blades *
- Fan is factory mounted
- Adj. thermostat, A/C Relay
- 2 Row 1" tubes

Part# 52007 67-69 Camaro radiator

Dims	27 ³ / ₄ " x 18 ¹ / ₂ " x 3 ³ / ₄ "
Core Dims	22" x 18" x 2 ¹ / ₄ "
inlet/outlet	1 ¹ / ₄ " inlet x 1 ³ / ₄ " outlet x 2 ¹ / ₂ " long
inlet location	passenger side

Part# 52187 67-69 Camaro rad w/ 180 fan

Dims	27 ³ / ₄ " x 18 ¹ / ₂ " x 7"
Fan Part#	180
Amp Draw	18
Air Flow	3300 cfm
Controls	Adj. thermostat, A/C relay
inlet location	passenger side
inlet/outlet	1 ¹ / ₄ " inlet x 1 ³ / ₄ " outlet x 2 ¹ / ₂ " long



Universal Fit

- 26" core
- Radiator only
- "L" Brackets are included
- 2 Row 1" tubes



Universal Fit

- 26" core
- Radiator / Fan combo
- Reversible - blades *
- Fan is factory mounted
- "L" Brackets are included
- Adj. thermostat, A/C Relay
- 2 Row 1" tubes

Part# 55000 radiator only

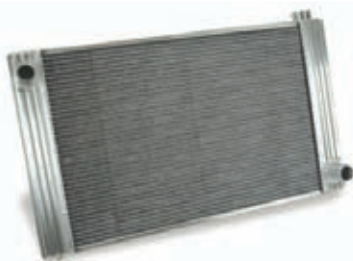
Dims	31 ⁵ / ₈ " x 12 ¹ / ₂ " x 3 ³ / ₄ "
Core Dims	26" x 12" x 2 ¹ / ₄ "
inlet/outlet	1 ¹ / ₂ " inlet x 1 ³ / ₄ " outlet x 2 ¹ / ₂ " long
inlet location	55000R = passenger / 55000L = driver

Part# 55330 radiator w/ 330 fan

Dims	31 ⁵ / ₈ " x 12 ¹ / ₂ " x 7"
Fan Part#	330
Amp Draw	15
Air Flow	2029 cfm
Controls	Adj. thermostat, A/C relay
inlet location	55330R = passenger / 55330L = driver
inlet/outlet	1 ¹ / ₂ " inlet x 1 ³ / ₄ " outlet x 2 ¹ / ₂ " long

* Reversible blades can be inverted and the motor wires can be reversed for use as a puller or pusher fan

Flex-a-fit® Radiator/Fan Combos



Universal Fit

- 26" core
- Radiator only
- "L" Brackets are included
- 2 Row 1" tubes

Part# 56000 radiator only

Dims	31 $\frac{1}{8}$ " x 18 $\frac{1}{2}$ " x 3 $\frac{3}{4}$ "
Core Dims	26" x 18" x 2 $\frac{1}{4}$ "
inlet/outlet	1 $\frac{1}{2}$ " inlet x 1 $\frac{3}{4}$ " outlet x 2 $\frac{1}{2}$ " long
inlet location	56000R = passenger / 56000L = driver



Universal Fit

- 26" core
- Radiator / Fan combo
- Uses Part# 56000
- Fan is factory mounted
- "L" Brackets are included
- Variable Speed Controller
- 2 Row 1" tubes

Part# 56410 radiator w/ 410 fan

Dims	31 $\frac{1}{8}$ " x 18 $\frac{1}{2}$ " x 5 $\frac{1}{8}$ "
Fan Part#	410
Amp Draw	14-22
Air Flow	2500 cfm
Controls	Variable Speed Control
inlet location	56410R = passenger / 56410L = driver
inlet/outlet	1 $\frac{1}{2}$ " inlet x 1 $\frac{3}{4}$ " outlet x 2 $\frac{1}{2}$ " long



Universal Fit

- 26" core
- Radiator / Fan combo
- Uses Part# 56000
- Fans factory mounted
- "L" Brackets are included
- Adj. thermostat, A/C Relay
- 2 Row 1" tubes

Part# 56412 radiator w/ 412 fan

Dims	31 $\frac{1}{8}$ " x 18 $\frac{1}{2}$ " x 5 $\frac{1}{8}$ "
Fan Part#	412
Amp Draw	22
Air Flow	2500 cfm
Controls	Adj. thermostat, A/C relay
inlet location	56412R = passenger / 56412L = driver
inlet/outlet	1 $\frac{1}{2}$ " inlet x 1 $\frac{3}{4}$ " outlet x 2 $\frac{1}{2}$ " long

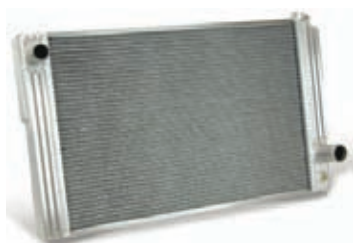


Universal Fit

- 26" core
- Radiator / Fan combo
- Uses Part# 56000
- Fans factory mounted
- "L" Brackets are included
- Variable Speed Controller
- 2 Row 1" tubes

Part# 56480 radiator w/ 480 fan

Dims	31 $\frac{1}{8}$ " x 18 $\frac{1}{2}$ " x 7"
Fan Part#	480
Amp Draw	17.5-29
Air Flow	3000 cfm
Controls	Variable Speed Control
inlet location	56480R = passenger / 56480L = driver
inlet/outlet	1 $\frac{1}{2}$ " inlet x 1 $\frac{3}{4}$ " outlet x 2 $\frac{1}{2}$ " long



82-92 Camaro

- Fits 82-92 Camaro/Firebird
- O.E. radiator mounting points
- O.E. Brackets are included
- 26" core
- Radiator only
- 2 Row 1" tubes

Part# 56400 82-92 Camaro radiator

Dims	31 $\frac{1}{8}$ " x 18 $\frac{1}{2}$ " x 3 $\frac{3}{4}$ "
Core Dims	26" x 18" x 2 $\frac{1}{4}$ "
inlet/outlet	1 $\frac{1}{2}$ " inlet x 1 $\frac{3}{4}$ " outlet x 2 $\frac{1}{2}$ " long
inlet location	driver side



82-92 Camaro

- Fits 82-92 Camaro/Firebird
- O.E. radiator mounting points
- O.E. Brackets are included
- 26" core
- Radiator / Fan combo
- Uses Part# 56400
- Variable Speed Controller
- 2 Row 1" tubes

Part# 56484 82-92 Camaro rad w/ 480 fan

Dims	31 $\frac{1}{8}$ " x 18 $\frac{1}{2}$ " x 7"
Fan Part#	480
Amp Draw	17.5-29
Air Flow	3000 cfm
Controls	Variable Speed Control
inlet location	driver side
inlet/outlet	1 $\frac{1}{2}$ " inlet x 1 $\frac{3}{4}$ " outlet x 2 $\frac{1}{2}$ " long

Flex-a-fit[®] Radiator/Fan Combos



10-11 Camaro

- Fits 10-11 Camaro*
- O.E. radiator mounting points
- O.E. Brackets are included
- 26" core
- Radiator only
- 2 Row 1" tubes

Part# 56418 10-11 Camaro radiator

Dims	31 $\frac{5}{8}$ " x 18 $\frac{1}{2}$ " x 3 $\frac{3}{4}$ "
Core Dims	26" x 18" x 2 $\frac{1}{4}$ "
inlet/outlet	1 $\frac{3}{8}$ " inlet x 1 $\frac{3}{8}$ " outlet x 2 $\frac{1}{2}$ " long
inlet location	driver side

* If your Camaro is equipped with an Automatic Transmission, your application will require a Transmission Cooler kit Part# 4116C located on page 47.



10-11 Camaro

- Fits 10-11 Camaro*
- O.E. radiator mounting points
- O.E. Brackets are included
- 26" core
- Radiator / Fan combo
- Uses Part# 56418
- 2 Row 1" tubes
- Includes 20# Radiator Cap

Part# 56488 10-11 Camaro rad w/ 480 fan

Dims	31 $\frac{5}{8}$ " x 18 $\frac{1}{2}$ " x 7"
Fan Part#	480
Amp Draw	17.5-29
Air Flow	3000 cfm
inlet location	driver side
inlet/outlet	1 $\frac{3}{8}$ " inlet x 1 $\frac{3}{8}$ " outlet x 2 $\frac{1}{2}$ " long

Universal Fit



- 32 $\frac{1}{2}$ " core
- Radiator only
- "L" Brackets are included
- 2 Row 1" tubes

Part# 57000 radiator only

Dims	38" x 18 $\frac{1}{2}$ " x 3 $\frac{3}{4}$ "
Core Dims	32 $\frac{1}{2}$ " x 18" x 2 $\frac{1}{4}$ "
inlet/outlet	1 $\frac{1}{2}$ " inlet x 1 $\frac{3}{4}$ " outlet x 2 $\frac{1}{2}$ " long
inlet location	57000R = passenger / 57000L = driver

Universal Fit



- 32 $\frac{1}{2}$ " core
- Radiator / Fan combo
- Uses Part# 57000
- Reversible - blades*
- Fans factory mounted
- "L" Brackets are included
- Variable Speed Controller
- 2 Row 1" tubes

* Reversible blades can be inverted and the motor wires can be reversed for use as a puller or pusher fan

Part# 57294 radiator w/ 294 fan

Dims	38" x 18 $\frac{1}{2}$ " x 7"
Fan Part#	294
Amp Draw	28-36
Air Flow	6000 cfm
Controls	Variable Speed Control
inlet location	57294R = passenger / 57294L = driver
inlet/outlet	1 $\frac{1}{2}$ " inlet x 1 $\frac{3}{4}$ " outlet x 2 $\frac{1}{2}$ " long

Universal Fit



- 28" core
- Radiator only
- "L" Brackets are included
- 2 Row 1" tubes

Part# 58000 radiator only

Dims	33 $\frac{3}{8}$ " x 18 $\frac{1}{2}$ " x 3 $\frac{3}{4}$ "
Core Dims	28" x 18" x 2 $\frac{1}{4}$ "
inlet/outlet	1 $\frac{1}{2}$ " inlet x 1 $\frac{3}{4}$ " outlet x 2 $\frac{1}{2}$ " long
inlet location	58000R = passenger / 58000L = driver

Universal Fit

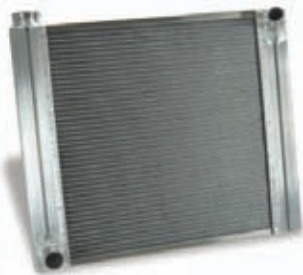


- 28" core
- Radiator / Fan combo
- Uses Part# 58000
- Fan is factory mounted
- "L" Brackets are included
- Variable Speed Controller
- 2 Row 1" tubes

Part# 58295 radiator w/ 295 fan

Dims	33 $\frac{3}{8}$ " x 18 $\frac{1}{2}$ " x 7"
Fan Part#	295
Amp Draw	16-28
Air Flow	2740-4600 cfm
Controls	Variable Speed Control
inlet location	58295R = passenger / 58295L = driver
inlet/outlet	1 $\frac{1}{2}$ " inlet x 1 $\frac{3}{4}$ " outlet x 2 $\frac{1}{2}$ " long

Slim Profile Aluminum Radiators



87-06 Jeep Wrangler*

- Fits 87-06 Jeep Wrangler
- O.E. Brackets are included
- 17" core
- Slim Profile 2-row core all-aluminum 1/2" tubes
- Radiator only
- 2 Row 1/2" tubes (slim)



87-06 Jeep Wrangler*

- Fits 87-06 Jeep Wrangler
- O.E. Brackets are included
- 17" core
- Slim Profile 2-row core all-aluminum 1/2" tubes
- Radiator / Fan combo
- Fan is factory mounted
- Uses Part# 60087
- Adj. thermostat, A/C relay

Part# 60087 radiator only	
Dims	22 ³ / ₈ " x 18 ⁵ / ₈ " x 2 ¹ / ₄ "
Core Dims	17" x 18 ¹ / ₂ " x 1 ¹ / ₂ "
inlet/outlet	1 ¹ / ₄ " inlet x 1 ¹ / ₂ " outlet x 2 ¹ / ₂ " long
inlet location	passenger side

Part# 60187 87-06 Wrangler rad w/ 160 fan	
Dims	22 ³ / ₈ " x 18 ⁵ / ₈ " x 5 ⁷ / ₈ "
Fan Part#	160
Amp Draw	17.5-29
Air Flow	3000 cfm
Controls	Adj. thermostat, A/C relay
inlet location	passenger side
inlet/outlet	1 ¹ / ₂ " inlet x 1 ³ / ₄ " outlet x 2 ¹ / ₂ " long

* This Radiator & Radiator/Fan combo requires a Radiator Cap, the OEM cap will not work. We recommend part# 32101. Automatic Transmission, will require a Transmission Cooler kit located on page 47.



Universal Fit

- 17" core
- Radiator only
- "L" Brackets are included
- 2 Row 1/2" tubes (slim)



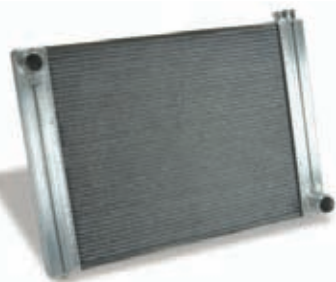
Universal Fit

- 17" core
- Slim Profile 2-row core all-aluminum 1/2" tubes
- Radiator / Fan combo
- Uses Part# 61000
- Adj. thermostat, A/C relay
- Reversible

* Reversible blades can be inverted and the motor wires can be reversed for use as a puller or pusher fan

Part# 61000 radiator only	
Dims	22 ³ / ₈ " x 18 ⁵ / ₈ " x 2 ¹ / ₄ "
Core Dims	17" x 18 ¹ / ₂ " x 1 ¹ / ₂ "
inlet/outlet	1 ¹ / ₂ " inlet x 1 ³ / ₄ " outlet x 2 ¹ / ₂ " long
inlet location	61000R = passenger / 61000L = driver

Part# 61160 radiator w/ 160 fan	
Dims	22 ³ / ₈ " x 18 ⁵ / ₈ " x 5 ⁷ / ₈ "
Fan Part#	160
Amp Draw	19.5
Air Flow	3000 cfm
Controls	Adj. thermostat, A/C relay
inlet location	61160R = passenger / 61160L = driver
inlet/outlet	1 ¹ / ₂ " inlet x 1 ³ / ₄ " outlet x 2 ¹ / ₂ " long



Universal Fit

- 22" core
- Radiator only
- "L" Brackets are included
- 2 Row 1/2" tubes (slim)



Universal Fit

- 22" core
- Slim Profile 2-row core all-aluminum 1/2" tubes
- Radiator / Fan combo
- Uses Part# 62000
- Adj. thermostat, A/C relay
- Reversible

* Reversible blades can be inverted and the motor wires can be reversed for use as a puller or pusher fan

Part# 62000 radiator only	
Dims	27" x 18 ⁵ / ₈ " x 2 ¹ / ₄ "
Core Dims	21 ³ / ₄ " x 18 ¹ / ₂ " x 1 ¹ / ₂ "
inlet/outlet	1 ¹ / ₂ " inlet x 1 ³ / ₄ " outlet x 2 ¹ / ₂ " long
inlet location	62000R = passenger / 62000L = driver

Part# 62180 radiator w/ 180 fan	
Dims	27" x 18 ⁵ / ₈ " x 5 ⁷ / ₈ "
Fan Part#	180
Amp Draw	18
Air Flow	3300 cfm
Controls	Adj. thermostat, A/C relay
inlet location	62180R = passenger / 62180L = driver
inlet/outlet	1 ¹ / ₂ " inlet x 1 ³ / ₄ " outlet x 2 ¹ / ₂ " long

Slim Profile Aluminum Radiators



Universal Fit

- 15½" core
- Radiator only
- "L" Brackets are included
- 2 Row ½" tubes (slim)

Part# 63000 radiator only

Dims	20 ⁷ / ₈ " x 14 ¹ / ₂ " x 2 ¹ / ₄ "
Core Dims	15 ¹ / ₂ " x 13 ⁷ / ₈ " x 1 ¹ / ₂ "
inlet/outlet	1½" inlet x 1¾" outlet x 2½" long
inlet location	63000R = passenger / 63000L = driver



Universal Fit

- 15½" core
- Slim Profile 2-row core all-aluminum ½" tubes
- Radiator / Fan combo
- Uses Part# 63000
- Adj. thermostat, A/C relay
- 63113 includes VSC

Part# 63111, 63113 radiator w/fan

Dims	20 ⁷ / ₈ " x 14 ¹ / ₂ " x 4 ¹ / ₂ "
Fan Part#	111
Amp Draw	11
Air Flow	1250 cfm
Controls	Adj. thermostat, A/C relay / VSC
inlet location	63XXXR = passenger / 63XXXL = driver
inlet/outlet	1½" inlet x 1¾" outlet x 2½" long



Universal Fit

- 15½" core
- Radiator only
- "L" Brackets are included
- 2 Row ½" tubes (slim)

Part# 63000 radiator only

Dims	20 ⁷ / ₈ " x 14 ¹ / ₂ " x 2 ¹ / ₄ "
Core Dims	15 ¹ / ₂ " x 13 ⁷ / ₈ " x 1 ¹ / ₂ "
inlet/outlet	1½" inlet x 1¾" outlet x 2½" long
inlet location	63000R = passenger / 63000L = driver



Universal Fit

- 15½" core
- Slim Profile 2-row core all-aluminum ½" tubes
- Radiator / Fan combo
- Uses Part# 63000
- Reversible
- 2 Row ½" tubes (slim)

Part# 63115 radiator w/ 115 fan

Dims	20 ⁷ / ₈ " x 14 ¹ / ₂ " x 5 ⁵ / ₈ "
Fan Part#	115
Amp Draw	15
Air Flow	1505 cfm
Controls	Adj. thermostat, A/C relay
inlet location	63115R = passenger / 63115L = driver
inlet/outlet	1½" inlet x 1¾" outlet x 2½" long



Universal Fit

- 26" core
- Radiator only
- "L" Brackets are included
- 2 Row ½" tubes (slim)

Part# 66000 radiator only

Dims	31 ⁷ / ₈ " x 15 ⁵ / ₈ " x 2 ¹ / ₄ "
Core Dims	26 ¹ / ₂ " x 15 ¹ / ₂ " x 1 ¹ / ₂ "
inlet/outlet	1½" inlet x 1¾" outlet x 2½" long
inlet location	66000R = passenger / 66000L = driver



Universal Fit

- 26" core
- Slim Profile 2-row core all-aluminum ½" tubes
- Radiator / Fan combo
- Uses Part# 66000
- Reversible

Part# 66412, 66480 radiator / fan

Dims	66412 - 31 ⁷ / ₈ " x 15 ⁵ / ₈ " x 4 ¹ / ₂ "
Dims	66480 - 31 ⁷ / ₈ " x 15 ⁵ / ₈ " x 5 ⁵ / ₈ "
Fan Part#	412 / 480
Amp Draw	22 / 17.5-29
Air Flow	2500 cfm / 3000 cfm
Controls	Adj. thermostat, A/C relay / VSC
inlet location	66XXXR = passenger / 66XXXL = driver
inlet/outlet	1½" inlet x 1¾" outlet x 2½" long

Electric Cooling Fans



Increased Horsepower ■ Torque ■ Gas Mileage ■ AC Output

Puller Fans are primary cooling fans that replace the stock belt driven fan:

- More horsepower
- Fuel savings
- Cooler A/C output
- Extend Water Pump life

Pusher Fans are for auxiliary cooling in front of the radiator:

- Provides additional cooling at idle or high torque applications
- Removes excess engine compartment heat

Reversible Fans can be used in the front or behind the radiator:

- Can be used as pusher or puller

All shrouded electric fans are durable Glass Reinforced Nylon with full contact rubber seal

How to choose an Electric Fan

PART#	WIDTH	HEIGHT	DEPTH	CFM	AMP DRAW	PAGE
30, 35	16"	18"	4¼"	1950	9.8	23
40	16"	18"	4¼"	1950	9.8	23
50, 55	10½"	11¼"	2½"	850	7.0	23
106	7"	7¼"	2¾"	340	4	23
108	10¾"	11¼"	2¼"	800	6.5	23
111, 123	15"	13½"	2¾"	1250	11.0	24
112	12"	13"	3½"	1105	8.0	24
114	14¼"	14¾"	3½"	1585	9.5	24
115, 117	15"	13½"	4"	1505	15	24
116	16"	16½"	3¾"	2215	11	24
118, 119	16"	16½"	3¾"	2500	18.5	24
125	15"	13½"	2¾"	1250	9.5	25
133, 143	15"	13½"	2¾"	1250	11.0	25
160, 168	16"	18"	4¼"	3000	19.5	25
175	16"	18"	4¼"	2800	13.9	25
180, 188	21½"	17½"	4¾"	3300	18.0	26
183	21½"	17½"	4¾"	3300	18.0	26
185	21½"	17½"	4¾"	3300	18.0	26
262	37¼"	20¼"	4¼"	3300-5500	28-36	26
264	27"	29"	4¼"	3300-5500	28-36	27
270	31½"	17"	4½"	3300-5500	12-28	27
272	26½"	30"	4¼"	6200	28-36	27
280, 282	31½"	17"	4½"	3300-5500	12-28	27
284	31½"	17"	4½"	6000	28-36	28
285, 290	31½"	17"	4½"	3300-5500	12-28	28
292	27½"	17½"	4"	2740-4600	16-28	28
293, 294	31½"	17"	4½"	6000	28-36	28
295, 298	27½"	17½"	4"	2740-4600	16-28	29
318, 328	16"	16½"	3¾"	2500	18.5	29
330, 340	25½"	12¾"	3¾"	2029	15	29
345	25½"	12¾"	3¾"	2029	19.5	29
365	18½"	13"	2½"	1600	14.0	30
390	10¾"	11½"	2¾"	775	5.2	30
392	11¾"	12¾"	2¾"	925	7.7	30
394	13¾"	14½"	3¾"	1530	9.2	30
396	15¾"	16¾"	4"	1980	13.5	30
398	15¾"	16¾"	4"	2500	17.0	30
410, 420	26¼"	15½"	2¾"	2500	14-22	31
412	26¼"	15½"	2¾"	2500	22	31
430, 440	26¼"	15½"	2¾"	2500	14-22	31
432	26¼"	15½"	2¾"	2500	22	31
480, 490	15½"	26½"	4"	3000	15	31
485	21½"	17½"	4¾"	3300	18.0	31
573, 583	26¼"	15½"	2¾"	2500	22	32
575, 580	26¼"	15½"	2¾"	2500	19.5	32
674, 684	16"	18"	4¼"	3000	19.5	32
675, 680	26¼"	15½"	2¾"	2500	19.5	32
678, 688	21½"	17½"	4¾"	3300	18.0	33
775, 778	27½"	17½"	4"	2740-4600	16-28	33

How to choose an Electric Fan

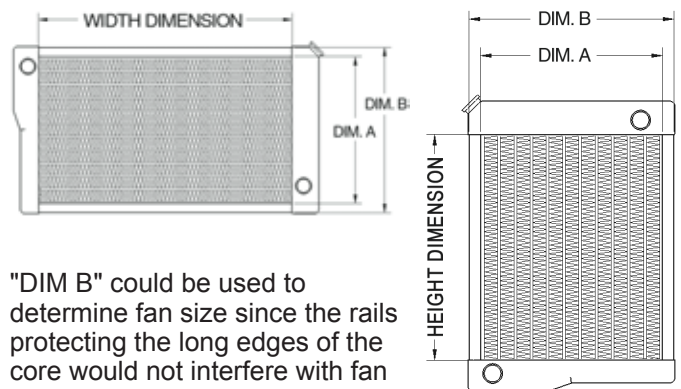
If there is no electric fan kit recommended for your vehicle in this catalog **Application Specific** section, these steps will help you select the best electric cooling fan for your application:

1. Measure the mounting surface on the radiator core. Mounting surface is usually defined as the finned core area (see drawings on right).
2. Note how much space (depth) is available between radiator and nearest obstruction for an electric fan. Also note other possible obstructions to mounting an electric fan (trans. oil cooler, a/c, power steering lines, wiring, overflow tanks, etc).
3. If the fan will be thermostatically controlled, determine whether the O.E. controls can be used. If not, order a Flex-a-lite® fan kit with thermostatic controls, or an Adjustable Temperature Sensor kit (see the **Electric Cooling Fan Accessories** page in this catalog).
4. Fans can be mounted using either through-core plastic bolts or rigid brackets. Flex-a-lite recommends rigid bracket mounting for electric fans whenever possible to prevent damage to the radiator core. Most Flex-a-lite electric fan kits are available with rigid mounting brackets.
5. Fans must move a minimum CFM of: 1250 cfm for L4, 2000 cfm for V6 and 2500 cfm for V8

There are many factors that affect what size electric fan will be adequate to cool your vehicle: Engine size/output, radiator size & design, and outside air temperature and density (just to name a few). Generally speaking, it is best to cover all of the finned core area for full airflow through core when choosing an electric fan. For example, you may be able to fit two 14" Trimline fans or one low-profile dual fan assembly on your radiator. The two separate fans have a bit better airflow potential, but the dual fan assembly would be a better choice because it covers a much larger area of the core.

NOTE: Flex-a-lite does not recommend using an electric fan for the primary cooling source on 4-core radiators. Flex-a-lite® also recommends at least 70% of the finned core area be covered by an electric fan/shroud assembly for optimum cooling. Engines 5.0L and above should have at least 2800 cfm of air flow.

All fan dimensions are shown as
WIDTH x HEIGHT x DEPTH



"DIM B" could be used to determine fan size since the rails protecting the long edges of the core would not interfere with fan mounting or sealing to the core.

Electric Cooling Fans



Electra-Fan II – Universal Fit

Part# 30, 35 (puller)	
Air Flow	2,050 cfm
Dims	16" x 18" x 4½"
Amp Draw	10.5
Fits	Universal Fit
#blades/dia.	10/15"
Controls	30: Adj. thermostat, A/C relay 35: None
Fuse/Breaker	25 Amp Fuse



Ranger/Bronco II '84-'97 Fan – Application Specific

Part# 40 (puller)	
Air Flow	2,050 cfm
Dims	16" x 18" x 4½"
Amp Draw	10.5
Fits	'84-'97 4 & 6cyl Ranger/Bronco II
#blades/dia.	10/15"
Controls	Adj. thermostat, A/C relay
Fuse/Breaker	25 Amp Fuse

Direct bolt-on to O.E. mounting points

NOTE: Meets recommended factory GCVW ratings



Auxiliary Electric Fan – Universal Fit

Part# 50, 55 (reversible)	
Air Flow	850 cfm
Dims	10½" x 11¾" x 2½"
Amp Draw	7
Fits	Universal Fit
#blades/dia.	4/10"
Controls	50: Adj. thermostat, A/C relay 55: None
Fuse/Breaker	20 Amp Fuse



Trimline Fans – Universal Fit

Part# 106, 108 (reversible)	
Air Flow	340 cfm / 800 cfm
106 Dims	7¼" x 7" x 2¾"
108 Dims	11¼" x 10¾" x 2¼"
Amp Draw	4 / 6.5
Fits	Universal Fit
#blades/dia.	10/6½" – 10/10"
Controls	none
Fuse/Breaker	20 Amp Fuse

Electric Cooling Fans



Trimline Fans – Universal Fit

Part# 112, 114, 116 (reversible)	
Air Flow	1,105 cfm / 1,585 cfm / 2,215 cfm
112 Dims	12" x 13" x 3½"
114 Dims	14¾" x 14¼" x 3½"
116 Dims	16½" x 16" x 3¾"
Amp Draw	8 / 9.5 / 11
Fits	Universal Fit
#blades/dia.	10/12" – 10/14" – 10/16"
Controls	none
Fuse/Breaker	20 Amp Fuse



LoBoy Fans – Universal Fit

Part# 118 (puller), 119 (pusher)	
Air Flow	2,500 cfm
Dims	16½" x 16" x 3¾"
Amp Draw	18.5
Fits	Universal Fit
#blades/dia.	10/16"
Controls	none
Fuse/Breaker	30 Amp Fuse



Lo-Profile S-blade – Universal Fit

Part# 111 (puller), 123 (puller)	
Air Flow	1,250 cfm
Dims	15" x 13½" x 2⅝"
Amp Draw	11
Fits	Universal Fit
#blades/dia.	8/12⅞"
Controls	111: Adj. thermostat, A/C relay 123: none
Fuse/Breaker	25 Amp Fuse



X-treme S-blade – Universal Fit

Part# 115 (reversible), 117 (reversible)	
Air Flow	1,505 cfm
Dims	15" x 13½" x 4"
Amp Draw	15
Fits	Universal Fit
#blades/dia.	8/12⅞"
Controls	115: Adj. thermostat, A/C relay 117: none
Fuse/Breaker	25 Amp Fuse

Electric Cooling Fans



Honda Civic '92-'00 Fan – Application Specific

Part# 125 (puller)	
Air Flow	1,250 cfm
Dims	15" x 13½" x 2⅝"
Amp Draw	9.5
Fits	'92-'00 Honda Civic
#blades/dia.	10/12"
Controls	none
Fuse/Breaker	N/A

Electrical connectors plug into Civic harness
Direct bolt-on to O.E. mounting points



Lo-Profile S-blade – Universal Fit



Part# 133 (pusher), 143 (pusher)	
Air Flow	1,250 cfm
Dims	15" x 13½" x 2⅝"
Amp Draw	11
Fits	Universal Fit
#blades/dia.	8/12⅝"
Controls	133: Adj. thermostat, A/C relay 143: none
Fuse/Breaker	25 Amp Fuse



Black Magic S-blade – Universal Fit



Part# 160 (reversible), 168 (reversible)	
Air Flow	3,000 cfm
Dims	16" x 18" x 4¼"
Amp Draw	19.5
Fits	Universal Fit
#blades/dia.	8/15"
Controls	160: Adj. thermostat, A/C relay manual switch connection 168: none
Fuse/Breaker	40 Amp Fuse

When using a 16volt system, Air Flow increases to 3,200 cfm



Mustang 5.0L '79-'93 Fan – Application Specific

Part# 175 (puller)	
Air Flow	2,800 cfm
Dims	16" x 18" x 4¼"
Amp Draw	13.9
Fits	'79-'93 Mustang 5.0L
#blades/dia.	8/15"
Controls	175: Adj. thermostat, A/C relay manual switch connection
Fuse/Breaker	25 Amp Fuse

Direct bolt-on to O.E. mounting points

Electric Cooling Fans



Black Magic X-treme – Universal Fit

Part# 180 (reversible), 188 (reversible)	
Air Flow	3,300 cfm
Dims	21½" x 17½" x 4³/₁₆"
Amp Draw	18
Fits	Universal Fit
#blades/dia.	8/15"
Controls	180: Adj. thermostat, A/C relay 188: none
Fuse/Breaker	40 Amp Fuse



Dodge Ram Hemi '03-'09 – Application Specific

Part# 183 Black Magic X-treme (puller)	
Air Flow	3,300 cfm
Dims	21½" x 17½" x 4³/₁₆"
Amp Draw	18
Fits	'03-'09 Dodge Ram 1500-2500 V8
#blades/dia.	8/15"
Controls	183: Variable Speed Control
Fuse/Breaker	40 Amp Fuse

Direct bolt-on to O.E. mounting points

NOTE: Meets recommended factory GCWV ratings



Ford Mustang 5.0 '79-'93 – Application Specific

Part# 185 Black Magic X-treme (puller)	
Air Flow	3,300 cfm
Dims	21½" x 17½" x 4³/₁₆"
Amp Draw	18
Fits	'79-'93 Mustang 5.0L
#blades/dia.	8/15"
Controls	185: Adj. thermostat, A/C relay
Fuse/Breaker	40 Amp Fuse

Direct bolt-on to O.E. mounting points



Dodge Diesel '94-'02 Fan – Application Specific

Part# 262 (puller)	
Air Flow	3,300 - 5,500 cfm
Dims	37¼" x 20¼" x 4¼"
Amp Draw	28-36
Fits	'94-'02 Dodge Cummins Diesel
#blades/dia.	8/Dual 15"
Controls	Variable Speed Control
Fuse/Breaker	50 Amp Circuit Breaker

Direct bolt-on to O.E. mounting points

NOTE: Meets recommended factory GCWV ratings

Electric Cooling Fans



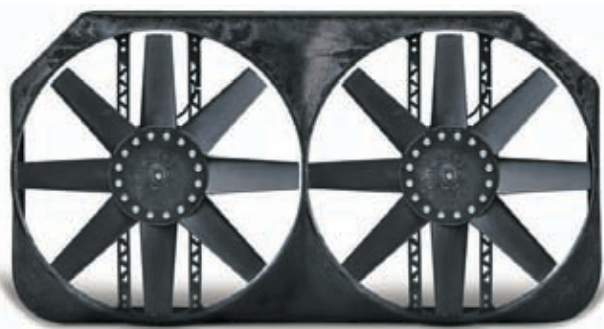
Dodge Diesel '03-'09 Fan – Application Specific

Part# 264 (puller)	
Air Flow	3,300-5,500 cfm
Dims	27" x 29" x 4¼"
Amp Draw	28-36
Fits	'03-'09 Dodge Cummins Diesel
#blades/dia.	8/Dual 15"
Controls	Variable Speed Control
Fuse/Breaker	50 Amp Circuit Breaker

Direct bolt-on to O.E. mounting points

NOTE: By disconnecting the electric clutch, this may cause your check engine light to illuminate after start-up. See dealer to clear check engine light.

NOTE: Meets recommended factory GCVW ratings



Ford Truck '97-'05 Fan – Application Specific

Part# 270 (puller)	
Air Flow	3,300-5,500 cfm
Dims	31⅞" x 17" x 4½"
Amp Draw	12-28
Fits	'97-'05 F150, 250 (non SuperDuty), Lightning, Harley Davidson Editions, Expedition, Lincoln Navigator
#blades/dia.	8/Dual 15"
Controls	Variable Speed Controller
Fuse/Breaker	30 Amp Fuse

Direct bolt-on to O.E. mounting points . Includes reservoir bracket for Lightning and super charged Harley Davidson editions.

NOTE: Meets recommended factory GCVW ratings



Ford SuperDuty '98-'03 Fan – Application Specific

Part# 272 (puller)	
Air Flow	6,200 cfm
Dims	26½" x 30" x 4¼"
Amp Draw	28-36
Fits	'98-'03 SuperDuty (5.4L*, 6.8L, 7.3L)
#blades/dia.	8/Dual 15"
Controls	Variable Speed Controller
Fuse/Breaker	50 Amp Circuit Breaker

Direct bolt-on to O.E. mounting points

NOTE: Meets recommended factory GCVW ratings



Chevy Truck '92-'04 Fan – Application Specific

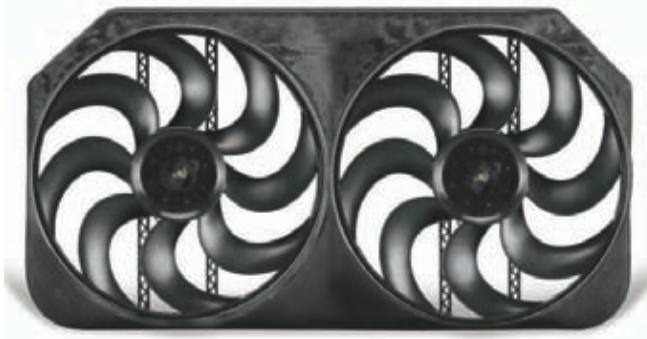
Part# 280 (puller), 282 (puller)	
Air Flow	3,300-5,500 cfm
Dims	31⅞" x 17" x 4½"
Amp Draw	12-28
Fits	280: '92-'99 Chevy, GMC, SUV 282: '00-'04 Chevy, GMC, SUV
#blades/dia.	8/Dual 15"
Controls	Variable Speed Controller
Fuse/Breaker	30 Amp Fuse

Direct bolt-on to O.E. mounting points

Must have a 34" Radiator Core. Direct bolt-on to O.E. mounting points

NOTE: Meets recommended factory GCVW ratings

Electric Cooling Fans

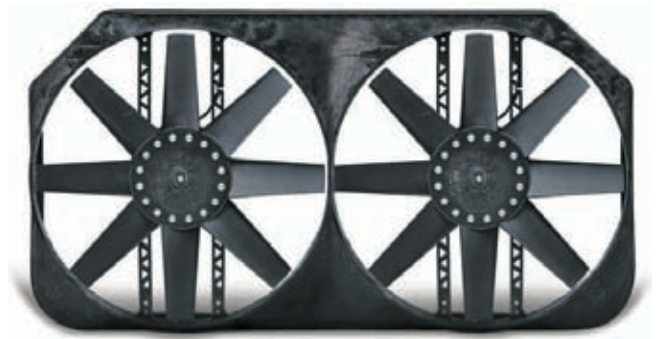


Chevy Duramax '01-'05 Fan – Application Specific

Part# 284 (puller)	
Air Flow	6,000 cfm
Dims	31 ⁷ / ₈ " x 17" x 4 ¹ / ₂ "
Amp Draw	28-36
Fits	'01-'05 Chevy/GMC Duramax Diesel
#blades/dia.	8/Dual 15"
Controls	Variable Speed Controller
Fuse/Breaker	50 Amp Circuit Breaker

Direct bolt-on to O.E. mounting points

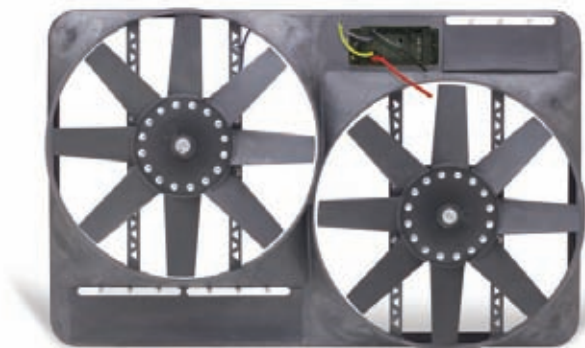
NOTE: Meets recommended factory GCVW ratings



Truck Fan – Universal Fit

Part# 285 (puller), 290 (puller)	
Air Flow	3,300-5,500 cfm
Dims	31 ⁷ / ₈ " x 17" x 4 ¹ / ₂ "
Amp Draw	12-28
Fits	Universal Fit
#blades/dia.	8/Dual 15"
Controls	290: Variable Speed Controller 285: none
Fuse/Breaker	30 Amp Fuse

NOTE: Meets recommended factory GCVW ratings

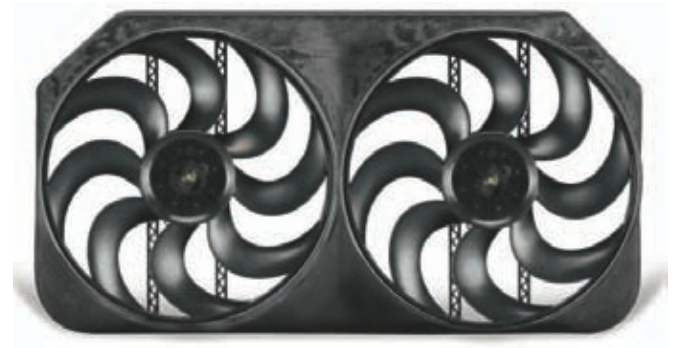


Chevy/GMC '00-'04 Truck Fan – Application Specific

Part# 292 (puller)	
Air Flow	2,740-4,600 cfm
Dims	27 ¹ / ₂ " x 17 ¹ / ₂ " x 4"
Amp Draw	16-28
Fits	'00-'04 Chevy/GMC
#blades/dia.	8/Dual 13 ¹ / ₂ "
Controls	Variable Speed Controller
Fuse/Breaker	30 Amp Fuse

Must have a 27¹/₂" Radiator Core. Direct bolt-on to O.E. mounting points

NOTE: Meets recommended factory GCVW ratings

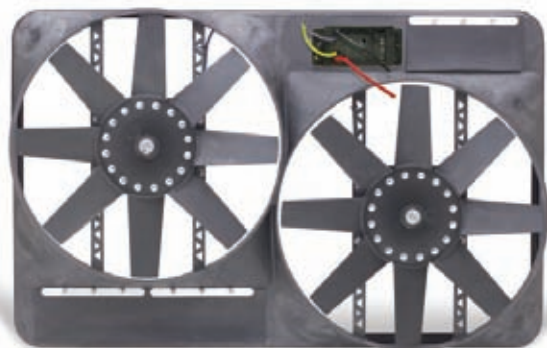


Truck Fan – Universal Fit

Part# 293 (reversible), 294 (reversible)	
Air Flow	6,000 cfm
Dims	31 ⁷ / ₈ " x 17" x 4 ¹ / ₂ "
Amp Draw	28-36
Fits	Universal Fit
#blades/dia.	8/Dual 15"
Controls	294: Variable Speed Controller 293: none
Fuse/Breaker	50 Amp Circuit Breaker

NOTE: Meets recommended factory GCVW ratings

Electric Cooling Fans



27" Electric Fan – Universal Fit

Part# 295 (puller), 298 (puller)	
Air Flow	2,740-4,600 cfm
Dims	27½" x 17½" x 4"
Amp Draw	16-28
Fits	Universal Fit
#blades/dia.	8/Dual 13½"
Controls	295: Variable Speed Controller 298: none
Fuse/Breaker	30 Amp Fuse

NOTE: Meets recommended factory GCVW ratings



Ford Coupe '30-'34 Fan – Application Specific

Part# 318 (puller), 328 (puller)	
Air Flow	2,500 cfm
Dims	17⅝" x 22½" x 4⅜"
Amp Draw	18.5
Fits	'30-'34 Ford Coupe
#blades/dia.	10/16"
Controls	318: Adj. thermostat, A/C relay 328: none
Fuse/Breaker	30 Amp Fuse

May require some modifications to radiator core supports



Compact Dual Fan – Universal Fit

Part# 330 (reversible), 340 (reversible)	
Air Flow	2,029 cfm
Dims	25½" x 12⅜" x 3¾"
Amp Draw	15
Fits	Universal Fit
#blades/dia.	10/Dual 11"
Controls	330: Adj. thermostat, A/C relay 340: none
Fuse/Breaker	30 Amp Fuse



Nissan 240SX '89-'98 – Application Specific

Part# 345 (puller)	
Air Flow	2,029 cfm
Dims	25½" x 12⅜" x 3¾"
Amp Draw	15
Fits	'89-'98 Nissan 240SX
#blades/dia.	10/Dual 11"
Controls	Adj. thermostat, A/C relay
Fuse/Breaker	30 Amp Fuse

Direct bolt-on to O.E. mounting points

Electric Cooling Fans



Scirocco Fan – for Drag Racing Radiator

Part# 365 (reversible)	
Air Flow	1,600 cfm
Dims	18" x 13" x 2½"
Amp Draw	14
Fits	O.E. and all aluminum Scirocco radiators
#blades/dia.	10/Dual 8⅝"
Controls	none
Fuse/Breaker	20 Amp Fuse

Direct bolt-on to O.E. and all aluminum Scirocco radiator mounting points

Designed for drag racing radiator applications.



S-blade Fan 10" – Universal Fit

Part# 390 (reversible)	
Air Flow	775 cfm
Dims	10⅞" x 11½" x 2⅝"
Amp Draw	5
Fits	Universal Fit
#blades/dia.	7/10"
Controls	none
Fuse/Breaker	20 Amp Fuse



S-blade Fan 12", 14", 16" – Universal Fit

Part# 392, 394, 396 (reversible)	
Air Flow	925 / 1,530 / 1,980 cfm
Dims 12"	11¼" x 12⅝" x 2⅝"
Dims 14"	13⅞" x 14½" x 3¼"
Dims 16"	15¼" x 16⅝" x 4"
Amp Draw	8 / 9 / 13.5
Fits	Universal Fit
#blades/dia.	8/12" / 8/14" / 8/15"
Controls	none
Fuse/Breaker	20 Amp Fuse



Syclone S-blade Fan 16" – Universal Fit

Part# 398 (reversible)	
Air Flow	2,500 cfm
Dims	15¼" x 16⅝" x 4"
Amp Draw	17
Fits	Universal Fit
#blades/dia.	8/15"
Controls	none
Fuse/Breaker	40 Amp Fuse

When using a 16volt system, Air Flow increases to 2,700 cfm

Electric Cooling Fans



Lo-Profile S-blade – Universal Fit



Part# 410 (puller), 412 (puller), 420 (puller)	
Air Flow	2,500 cfm
Dims	26¼" x 15½" x 2⅝"
Amp Draw	410/420: 14-22 412: 22
Fits	Universal Fit
#blades/dia.	8/Dual 12⅛"
Controls	410: Variable Speed Controller 412: Adj. thermostat, A/C relay 420: none
Fuse/Breaker	30 Amp Fuse



Lo-Profile S-blade – Universal Fit



Part# 430 (pusher), 432 (pusher), 440 (pusher)	
Air Flow	2,500 cfm
Dims	26¼" x 15½" x 2⅝"
Amp Draw	430/440: 14-22 432: 22
Fits	Universal Fit
#blades/dia.	8/Dual 12⅛"
Controls	430: Variable Speed Controller 432: Adj. thermostat, A/C relay 440: none
Fuse/Breaker	30 Amp Fuse



X-treme S-blade – Universal Fit



Part# 480 (reversible), 490 (reversible)	
Air Flow	3,000 cfm
Dims	26¼" x 15½" x 4"
Amp Draw	17.5-29
Fits	Universal Fit
#blades/dia.	8/Dual 12⅛"
Controls	480: Variable Speed Controller 490: none
Fuse/Breaker	30 Amp Fuse



Jeep Wrangler '87-'06 Fan – Application Specific

Part# 485 (reversible)	
Air Flow	3,300 cfm
Dims	21½" x 17½" x 4³⁄₁₆"
Amp Draw	18
Fits	'87-'05 Jeep Wrangler 4 & 6cyl
#blades/dia.	8/15"
Controls	Adj. thermostat, A/C relay
Fuse/Breaker	40 Amp Fuse

Direct bolt-on to O.E. mounting points
 NOTE: Late model Wranglers require an additional bracket
 4cyl Part# 30927 6cyl Part# 30928

Electric Cooling Fans



Jeep CJ '73-'86 S-blade – Application Specific

Part# 573 (puller), 583 (puller)	
Air Flow	2,500 cfm
Dims	26¼" x 15½" x 2⅝"
Amp Draw	22
Fits	'73-'86 Jeep CJ
#blades/dia.	8/Dual 12⅞"
Controls	573: Variable Speed Control 583: none
Fuse/Breaker	30 Amp Fuse



Jeep CJ '73-'86 Fan – Application Specific

Part# 575 (puller), 580 (puller)	
Air Flow	2,500 cfm
Dims	26¼" x 15½" x 2⅝"
Amp Draw	19.5
Fits	'73-'86 Jeep CJ
#blades/dia.	10/Dual 12"
Controls	575: Adj. thermostat, A/C relay 580: none
Fuse/Breaker	30 Amp Fuse



Toyota 4x4 '84-'96 Fan – Application Specific

Part# 674 (puller), 684 (puller)	
Air Flow	3,000 cfm
Dims	16" x 18" x 4½"
Amp Draw	19.5
Fits	'84-'96 Toyota 4x4
#blades/dia.	8/15"
Controls	674: Adj. thermostat, A/C relay manual switch connection 684: none
Fuse/Breaker	40 Amp Fuse

When using a 16volt system, Air Flow increases to 3,200 cfm

NOTE: Meets recommended factory GCVW ratings



Toyota Tacoma '95-'04 Fan – Application Specific

Part# 675 (puller), 680 (puller)	
Air Flow	2,500 cfm
Dims	26¼" x 15½" x 2⅝"
Amp Draw	19.5
Fits	'95-'04 Tacoma '96-'04 4Runner
#blades/dia.	10/Dual 12"
Controls	675: Adj. thermostat, A/C relay 680: none
Fuse/Breaker	30 Amp Fuse

NOTE: Meets recommended factory GCVW ratings

Electric Fans & Aluminum Shrouds



Toyota Tacoma '05-'11 – Application Specific

Part# 678 (puller), 688 (puller)	
Air Flow	3,300 cfm
Dims	21½" x 17½" x 4³/₁₆"
Amp Draw	18
Fits	'05-'09 Toyota Tacoma
#blades/dia.	8/15"
Controls	678: Adj. thermostat, A/C relay 688: none
Fuse/Breaker	40 Amp Fuse

NOTE: Meets recommended factory GCVW ratings



Toyota Tundra '00-'06 – Application Specific

Part# 775 (puller), 778 (puller)	
Air Flow	2,740- 4,600 cfm
Dims	27½" x 17½" x 4"
Amp Draw	16-28
Fits	'00-'06 Toyota Tundra
#blades/dia.	8/Dual 13½"
Controls	775: Variable Speed Control 778: none
Fuse/Breaker	30 Amp Fuse

NOTE: Meets recommended factory GCVW ratings

ALUMINUM SHROUDS with STRAIGHT BLADE ELECTRIC FANS

SHROUD / FAN COMBO

Includes fan, shroud, & mounting hardware (nuts, bolts, washers, and rubber bushings) & plain box packaging

Part #	Shroud Size	Fan Hole Size	CFM
53620	20" x 19½" x 4½"	14"	1920
53622	22" x 19½" x 4½"	14"	1920
53624	24" x 19½" x 4½"	16"	2500+
53626	26" x 19½" x 4½"	16"	2500+
53628	28" x 19½" x 4½"	16"	2500+

DUAL SHROUD / FAN COMBO

536268	26" x 19½" x 4.1"	10"	2100+
536288	28" x 19½" x 4½"	12"	2500+

SHROUD ONLY

Includes shroud & mounting hardware (nuts, bolts, washers & rubber bushings) & plain box packaging

Part #	Shroud Size	Fan Hole Size
53520	20" x 19 ½" x 1.1"	14"
53522	22" x 19 ½" x 1.1"	14"
53524	24" x 19 ½" x 1.1"	16"
53526	26" x 19 ½" x 1.1"	16"
53528	28" x 19 ½" x 1.1"	16"

DUAL SHROUD ONLY

535268	26" x 19 ½" x 1.1"	10"
535288	28" x 19 ½" x 1.1"	12"

Electric Fans & Aluminum Shrouds



ALUMINUM SHROUDS with S-BLADE ELECTRIC FANS

SHROUD / FAN COMBO

Includes fan, shroud, & mounting hardware (nuts, bolts, washers, and rubber bushings) & plain box packaging

Part #	Shroud Size	Fan Hole Size	CFM
53722	22" x 19 1/2" x 4 1/2"	14" S-Blade	1920
53724	24" x 19 1/2" x 4 1/2"	16" S-Blade	2500+
53726	26" x 19 1/2" x 4 1/2"	16" S-Blade	2500+
53728	28" x 19 1/2" x 4 1/2"	16" S-Blade	2500+

DUAL SHROUD / FAN COMBO

53726D	26" x 19 1/2" x 4.1"	10" S-Blade	2100+
53728D	28" x 19 1/2" x 4 1/2"	12" S-Blade	2500+

SHROUD ONLY

Includes shroud & mounting hardware (nuts, bolts, washers & rubber bushings) & plain box packaging

Part #	Shroud Size	Fan Hole Size
53520	20" x 19 1/2" x 1.1"	14"
53522	22" x 19 1/2" x 1.1"	14"
53524	24" x 19 1/2" x 1.1"	16"
53526	26" x 19 1/2" x 1.1"	16"
53528	28" x 19 1/2" x 1.1"	16"

DUAL SHROUD ONLY

535268	26" x 19 1/2" x 1.1"	10"
535288	28" x 19 1/2" x 1.1"	12"

24 VOLT Electric Fans



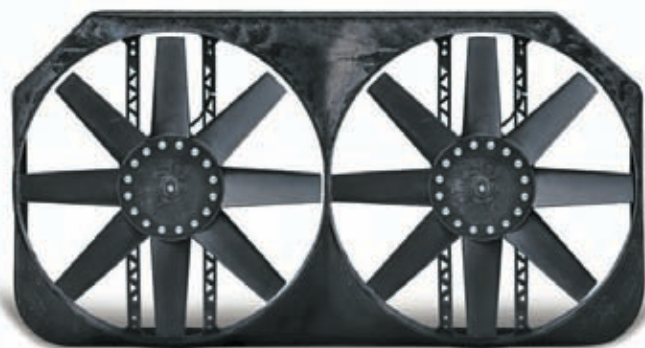
Trimline Fans – Universal Fit – 24v

Part# 10824,11224,11424,11624 (reversible)	
Air Flow	800cfm / 1105cfm / 1585cfm / 2215cfm
Dims	10" / 12" / 14" / 16"
Amp Draw	4 / 5 / 6 / 7
#blades/dia.	10/10" - 10/12" - 10/14" - 10/16"
Controls	none
Fuse/Breaker	15 Amp Fuse



Black Magic X-treme – Universal Fit – 24v

Part# 18024 (reversible)	
Air Flow	3300 cfm
Dims	17½" x 21½" x 4 ³ / ₁₆ "
Amp Draw	7-11
#blades/dia.	8/15"
Controls	Variable Speed Control
Fuse/Breaker	30 Amp Fuse



Truck Fan – Universal Fit – 24v

Part# 35024	
Air Flow	3300-5500 cfm
Dims	31 ⁷ / ₈ " x 17" x 4½"
Amp Draw	10
#blades/dia.	8/Dual 15"
Controls	Variable Speed Control
Fuse/Breaker	30 Amp Fuse



S-blade Fans – Universal Fit – 24v

Part# 39024,39224,39424,39624 (reversible)	
Air Flow	775cfm / 925cfm / 1530cfm / 2500cfm
Dims	10" / 12" / 14" / 16"
Amp Draw	3 / 5 / 6 / 10
#blades/dia.	7/10" - 8/12" - 8/14" - 8/16"
Controls	none
Fuse/Breaker	15 Amp Fuse

Belt Driven Fans



High Performance Belt-Driven Fans to eliminate the fan clutch or for O.E. replacement

When choosing a belt driven fan make sure to have the proper fan clearance (see page 38). You must also determine the fan rotation, reverse rotation fans are for serpentine applications.

Flex Fans aggressive pitch blade design moves the most air at idle:

- Flex blades will flatten out at high engine RPM to reduce engine drag
- Improved horsepower and gas mileage

7-blade Flex Fans staggered blades reduce fan noise and move more air during high torque situations:

- For high static pressure applications such as 3 or 4 row radiator cores

Low Profile Flex Fans have a less aggressive pitch blade design for tighter clearance applications:

- Recommended for 4 & 6 cylinder engines only
- Reduced engine drag results in better performance & gas mileage

Nylon Fans move a lot of air and weighs only 11 ounces:

- Ideal for race and performance applications when cost or weight is a concern

Race Fans eliminate the need for a fan clutch and have a rigid blade design:

- Less overall clearance is required as the blades will not flex towards the radiator

Spacers & Adapters position belt driven fans into the "sweet spot" in the fan shroud opening:

- Belt driven fans work best when they are 1" from the radiators surface

Clutch Fans & Clutches are original replacement parts.

How to choose a Belt Driven Fan

PART#	DIA.	PROJ. WIDTH	PAGE	
414	14"	2"	40	
415	15"	2"	40	
416	16"	2"	40	
417	17"	2"	40	
418	18 $\frac{1}{2}$ "	2"	40	
1017	17"	1 $\frac{1}{4}$ "	40	
1018	18"	1 $\frac{1}{4}$ "	40	
1070	17"	1 $\frac{1}{4}$ "	40	
1080	18"	1 $\frac{1}{4}$ "	40	
1307	17"	2 $\frac{1}{4}$ "	41	
1308	18 $\frac{1}{4}$ "	2 $\frac{1}{4}$ "	41	
1309	19 $\frac{1}{2}$ "	2 $\frac{1}{4}$ "	41	
1312	12"	2 $\frac{1}{4}$ "	41	
1313	13"	2 $\frac{1}{4}$ "	41	
1314	14"	2 $\frac{1}{4}$ "	41	
1315	15 $\frac{1}{4}$ "	2 $\frac{1}{4}$ "	41	
1316	16"	2 $\frac{1}{4}$ "	41	
1317	17"	2 $\frac{1}{4}$ "	41	
1318	18 $\frac{1}{4}$ "	2 $\frac{1}{4}$ "	41	
1319	19 $\frac{1}{2}$ "	2 $\frac{1}{4}$ "	41	
Reverse Rotation	1516	16"	2 $\frac{1}{4}$ "	41
Reverse Rotation	1517	17"	2 $\frac{1}{4}$ "	41
Reverse Rotation	1518	18 $\frac{1}{4}$ "	2 $\frac{1}{4}$ "	41
Reverse Rotation	1519	19 $\frac{1}{2}$ "	2 $\frac{1}{4}$ "	41

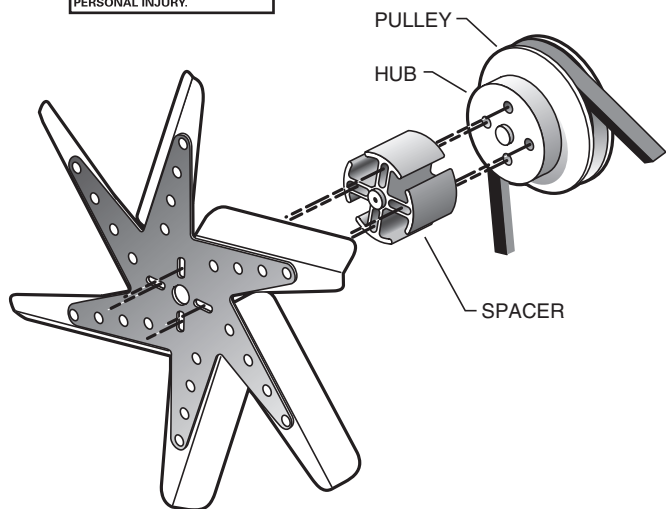
PART#	DIA.	PROJ. WIDTH	PAGE	
1615	15 $\frac{1}{4}$ "	1 $\frac{1}{4}$ "	39	
1617	17 $\frac{1}{2}$ "	1 $\frac{1}{4}$ "	39	
1618	18 $\frac{1}{2}$ "	1 $\frac{1}{4}$ "	39	
1619	19 $\frac{1}{2}$ "	1 $\frac{1}{4}$ "	39	
1715	15 $\frac{1}{4}$ "	1 $\frac{1}{4}$ "	39	
1717	17 $\frac{1}{2}$ "	1 $\frac{1}{4}$ "	39	
1718	18 $\frac{1}{2}$ "	1 $\frac{1}{4}$ "	39	
1719	19 $\frac{1}{2}$ "	1 $\frac{1}{4}$ "	39	
1817	17"	2 $\frac{1}{2}$ "	41	
1818	18 $\frac{1}{2}$ "	2 $\frac{1}{2}$ "	41	
Reverse Rotation	2615	15"	1 $\frac{1}{4}$ "	39
Reverse Rotation	2617	17 $\frac{1}{2}$ "	1 $\frac{1}{4}$ "	39
Reverse Rotation	2618	18"	1 $\frac{1}{4}$ "	39
Reverse Rotation	2619	19"	1 $\frac{1}{4}$ "	39
Reverse Rotation	2715	15"	1 $\frac{1}{4}$ "	39
Reverse Rotation	2717	17 $\frac{1}{2}$ "	1 $\frac{1}{4}$ "	39
Reverse Rotation	2718	18"	1 $\frac{1}{4}$ "	39
Reverse Rotation	2719	19"	1 $\frac{1}{4}$ "	39
Reverse Rotation	2817	17 $\frac{1}{2}$ "	1 $\frac{1}{4}$ "	40
Reverse Rotation	2818	18"	1 $\frac{1}{4}$ "	40
Reverse Rotation	5715	15 $\frac{1}{4}$ "	2 $\frac{3}{16}$ "	39
Reverse Rotation	5717	17 $\frac{1}{2}$ "	2 $\frac{3}{16}$ "	39
Reverse Rotation	5718	18 $\frac{1}{4}$ "	2 $\frac{3}{16}$ "	39
Reverse Rotation	5719	19 $\frac{1}{2}$ "	2 $\frac{3}{16}$ "	39
Reverse Rotation	5917	17 $\frac{1}{2}$ "	2 $\frac{3}{16}$ "	39
Reverse Rotation	5918	18 $\frac{1}{4}$ "	2 $\frac{3}{16}$ "	39
Reverse Rotation	5919	19 $\frac{1}{2}$ "	2 $\frac{3}{16}$ "	39

How to choose an Belt Driven Fan

If there is no fan recommended for your specific application in our Application Guide, refer to this section to help you select a fan.

1. Measure the inside diameter of the shroud or between obstructions to determine the largest diameter and thickness the fan can be and still fit within the shroud or mounting area (while maintaining proper clearances, see below).
2. Determine the fan rotation direction. Standing at the front of the vehicle looking towards the rear, clockwise = standard rotation; counterclockwise = reverse rotation. Operating a vehicle with the wrong fan rotation could result in vehicle damage and/or serious personal injury.
3. Consider what type of fan will be best for your vehicle (flex, clutch, race, economy fan, etc.). For example, a clutch fan may work well for a daily street driver, but will not be ideal for high-rpm applications. A flex fan or race fan would be better choice for a high-rpm application.
4. Note the bolt hole pattern and pilot hole used to mount the fan to the pulley or adapter and determine whether the Flex-a-lite fan will accommodate your pattern.
5. Measure the distance between the mounting surface (hub face) and the radiator core and fan shroud to determine whether any spacers or adapters will be necessary to mount and locate the fan. When installed, the fan should be clear of any obstructions, and the blades should be partially enclosed by the shroud if possible.

DANGER
FAILURE TO PROPERLY SELECT AND INSTALL A BELT FAN COULD RESULT IN DAMAGE TO THE VEHICLE AND POSSIBLY SERIOUS PERSONAL INJURY.



General Fan Positioning Guidelines

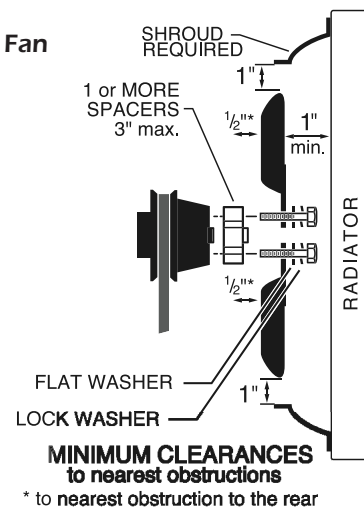
Use spacers according to the applications listed for stock engine set-ups. For engine swaps, check the clearances in your engine compartment and select the spacer(s) you need accordingly.

Multiple spacers may be used, up to a maximum of 3". The mounting surface on a Flex-a-lite spacer face is machined to a soft radius. This reduces point-loading, the most frequent cause of stress cracking on the fan center star.

We strongly recommend Flex-a-lite spacers be used with Flex-a-lite (or any other) brand of belt fans. Using any other brand of spacer will void the warranty on a Flex-a-lite fan.

Positioning a Shrouded Fan

Whenever you remove an O.E. fan clutch from your engine, you must add a spacer to bring your new fan back into the "sweet spot" in the fan shroud opening. You must allow 1" clearance to the fan shroud opening, and observe the other minimum clearances as shown in the diagram at right.



Belt Driven Fans

Race Fans



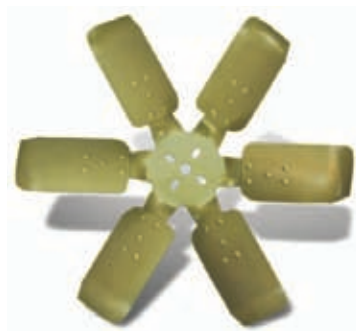
Part# 1615, 1617, 1618, 1619		
PART	DIA.	FAN RPM
1615	15¼"	8,000
1617	17⅞"	8,000
1618	18¼"	7,000
1619	19¼"	6,000

Color: **Steel star / Steel blades** - painted black

Part# 1715, 1717, 1718, 1719		
PART	DIA.	FAN RPM
1715	15¼"	8,000
1717	17⅞"	8,000
1718	18¼"	7,000
1719	19¼"	6,000

- Standard rotation
- Mounting pattern: ⅝" pilot, 1¼"-2½" bolt pattern
- Projected width: 1¾"
- Color: **Steel star / Aluminum blades** - painted black

Race Fans (reverse rotation)



Part# 2615,2617,2618,2619,2715,2717,2718,2719			
STEEL	ALUMINUM	DIA.	FAN RPM
2615	2715	15¼"	8,000
2617	2717	17⅞"	8,000
2618	2718	18¼"	7,000
2619	2719	19¼"	6,000

- **Reverse rotation**
- Mounting pattern: ⅝" pilot, 1¼"-2½" bolt pattern
- Projected width: 1¾"
- Color: **Gold star / Gold blades** - painted gold
- Available in Steel or Aluminum

O.E. Replacement Fans



Not for use with severe duty clutches

Part# 5715, 5717, 5718, 5719		
PART	DIA.	FAN RPM
5715	15¼"	4,000
5717	17¼"	4,000
5718	18¼"	4,000
5719	19¼"	4,000

- Standard rotation
- Mounting pattern: Dual clutch pattern: 3" & 3¼"
- Projected width: 2³/₁₆"
- Color: **Steel star / Aluminum blades** - painted black

O.E. Replacement Fans (reverse rotation)



Not for use with severe duty clutches

Part# 5917, 5918, 5919		
PART	DIA.	FAN RPM
5917	17¼"	4,000
5918	18¼"	4,000
5919	19¼"	4,000

- **Reverse rotation**
- Mounting pattern: 3¼"
- Projected width: 2³/₁₆"
- Color: **Steel star / Aluminum blades** - painted gold

WARNING
Must use Flex-a-lite Spacer or warranty will be voided

Belt Driven Fans

Nylon Fans



Part# 414, 415, 416, 417, 418		
PART	DIA.	FAN RPM
414	14"	8,000
415	15"	8,000
416	16"	8,000
417	17"	8,000
418	18"	8,000

- Standard rotation
- Mounting pattern: $\frac{5}{8}$ " pilot, $1\frac{3}{4}$ "- $2\frac{1}{2}$ " bolt pattern
- Projected width: 2"
- Color: Black

Low Profile Belt Fans - Aluminum



Part# 1017, 1018		
PART	DIA.	FAN RPM
1017	17"	8,000
1018	18"	8,000

- Standard rotation
- Mounting pattern: $\frac{5}{8}$ " pilot, $1\frac{3}{4}$ "- $2\frac{1}{2}$ " bolt pattern
- Projected width: $1\frac{1}{4}$ "
- Color: Dark Blue star / Aluminium blades

Low Profile Belt Fans - Stainless



Part# 1070, 1080		
PART	DIA.	FAN RPM
1070	17"	8,000
1080	18"	8,000

- Standard rotation
- Mounting pattern: $\frac{5}{8}$ " pilot, $1\frac{3}{4}$ "- $2\frac{1}{2}$ " bolt pattern
- Projected width: $1\frac{1}{4}$ "
- Color: Dark Blue star / Stainless blades

Low Profile Belt Fans (reverse rotation)



Part# 2817, 2818 reverse rotation		
PART	DIA.	FAN RPM
2817	17"	8,000
2818	18"	8,000

- **Reverse rotation**
- Mounting pattern: $\frac{5}{8}$ " pilot, $1\frac{3}{4}$ "- $2\frac{1}{2}$ " bolt pattern
- Projected width: $1\frac{1}{4}$ "
- Color: Gold star / Stainless blades

WARNING
Must use Flex-a-lite Spacer
or warranty will be voided

Belt Driven Fans

Flex Fans - (red)



Flex Fans - (blue)



Flex Fans - (reverse rotation)



7-Blade Flex Fan



Great for pulling air through thick (3 or 4 row) radiators and achieves quieter operation

⚠ DANGER
Edges are sharp! Wear gloves and long sleeves while working around any flex fan.

Part# 1307, 1308, 1309

PART	DIA.	FAN RPM
1307	17"	10,000
1308	18 ¹ / ₄ "	10,000
1309	19 ³ / ₈ "	10,000

- Standard rotation
- Mounting pattern: 5/8" pilot, 1 3/4"-2 1/2" bolt pattern
- Projected width: 2 1/4"
- Color: Red star / Stainless blades

Part# 1312, 1313, 1314, 1315, 1316, 1317, 1318, 1319

PART	DIA.	FAN RPM
5 Blade Fans		
1312	12"	10,000
1313	13"	10,000
1314	14"	10,000
1315	15 ¹ / ₄ "	10,000
6 Blade Fans		
1316	16"	10,000
1317	17"	10,000
1318	18 ¹ / ₄ "	10,000
1319	19 ³ / ₈ "	10,000

- Standard rotation
- Mounting pattern: 5/8" pilot, 1 3/4"-2 1/2" bolt pattern
- Projected width: 2 1/4"
- Color: Blue star / Stainless blades
- 12"-15" dia. have 5 blades
- 16"-19" dia. have 6 blades

Part# 1516, 1517, 1518, 1519

PART	DIA.	FAN RPM
1516	16"	10,000
1517	17"	10,000
1518	18 ¹ / ₄ "	10,000
1519	19 ³ / ₈ "	10,000

- **Reverse rotation**
- Mounting pattern: 5/8" pilot, 1 3/4"-2 1/2" bolt pattern
- Projected width: 2 1/4"
- Color: Gold star / Stainless blades

Part# 1817, 1818

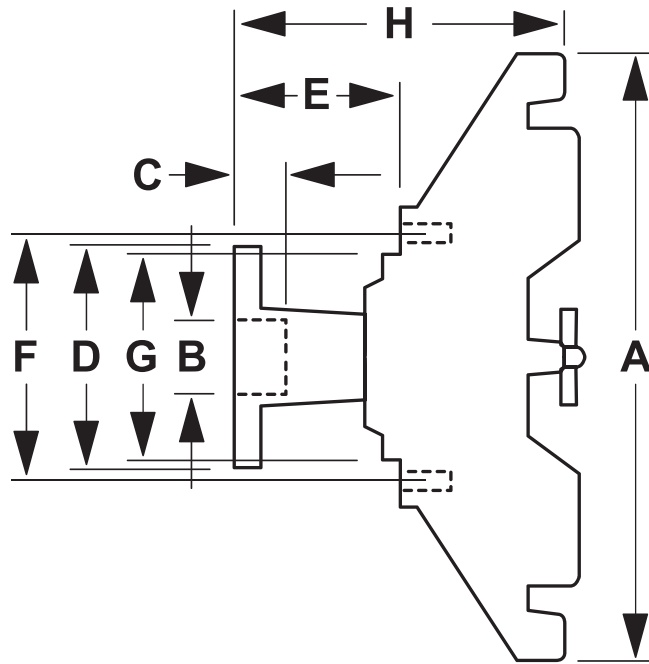
PART	DIA.	FAN RPM
1817	17"	8,000
1818	18 ¹ / ₄ "	8,000

- Standard rotation
- Mounting pattern: 5/8" pilot, 1 3/4"-2 1/2" bolt pattern
- Projected width: 2 1/2"
- Color: Blue star / Stainless blades

⚠ WARNING
Must use Flex-a-lite Spacer or warranty will be voided

Fan Clutches

Fan Clutch Measurements Chart



Fan Clutches



Part# 5237,5255,5257

Non-Thermal Clutches

- Low cost alternative to standard thermal clutches.
- Spins at about 30-60% of the water pump speed.
- Cannot be used to replace a heavy-duty clutch.

Part# 5534,5537,5555,5557,5560,5562

Thermal Clutches

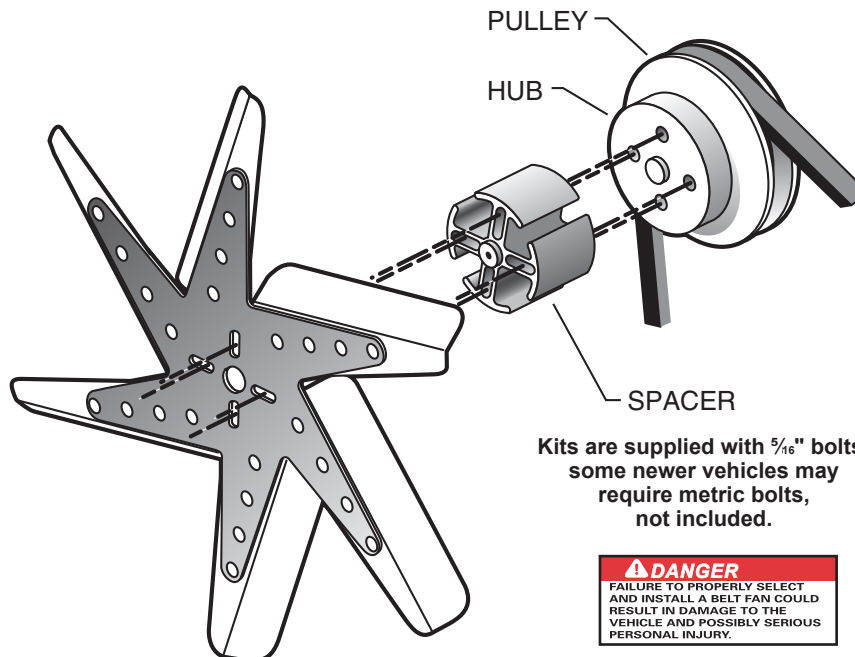
- Fan speed varies with temperature of the air
- When engaged provides maximum cooling.
- When disengaged provides fuel savings and less noise
- Briefly engaged at cold start-up.
- Engages at about 170° of external radiator temperature, (about 30° lower than coolant temperature).

Fan Clutch Specifications

Part #	Rotation	Overall Dia.	Pilot Dia.	Pilot Depth	Flange Circle	Fan Mount Height	Fan Bolt Circle	Fan Mount Dia.	Overall Height
		(A)	(B)	(C)	(D)	(E)	(F)	(G)	(H)
NON-THERMAL									
5237	Std/Rev	7.25	.63/.75	0.75	2.33	1.75	3.00	2.61	3.33
5255	Std/Rev	7.25	0.63	1.03	2.59	2.03	3.25	2.61	3.09
5257	Std/Rev	7.25	0.63	1.03	2.59	1.51	3.25	2.36	3.61
THERMAL									
5534	Std	7.25	.63/.75	0.75	2.33	1.40	3.00	2.36	2.98
5537	Std	7.25	.63/.75	0.75	2.33	1.75	3.00	2.36	3.33
5555	Std	7.25	0.63	1.03	2.59	1.51	3.25	2.61	3.09
5557	Std	7.25	0.63	1.03	2.59	2.03	3.25	2.61	3.61
5560	Rev	7.25	0.63	1.03	2.59	1.75	3.25	2.61	3.33
5562	Std	7.25	0.63	1.03	2.59	1.75	3.25	2.61	3.61

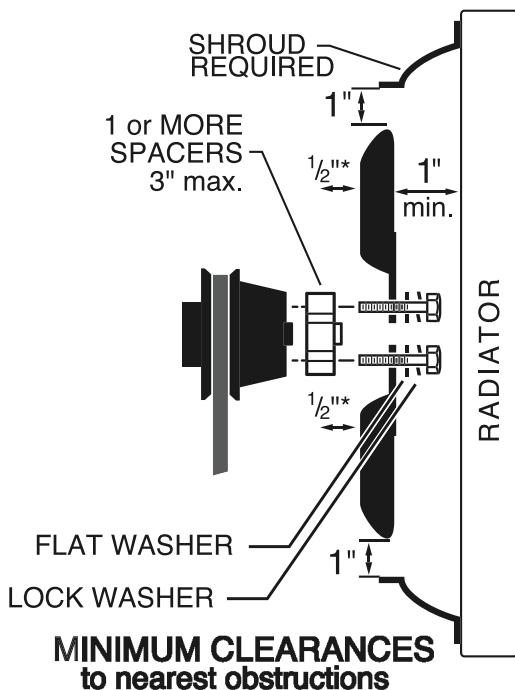
Note: All dimensions are in inches unless otherwise specified.

Spacers & Adapters



Kits are supplied with $\frac{5}{16}$ " bolts; some newer vehicles may require metric bolts, not included.

⚠ DANGER
FAILURE TO PROPERLY SELECT AND INSTALL A BELT FAN COULD RESULT IN DAMAGE TO THE VEHICLE AND POSSIBLY SERIOUS PERSONAL INJURY.



The bearing surface on a Flex-a-lite spacer face is larger and machined to a soft radius. This reduces point-loading, the most frequent cause of stress cracking on the fans center star.

This is why we strongly recommend Flex-a-lite spacers be used with Flex-a-lite (or any other) brand of belt fans.

Using any other brand of spacer will void the warranty on a Flex-a-lite fan.

Positioning a Shrouded Fan

When removing an O.E. fan clutch from your engine, a spacer is required to bring your new fan back into the "sweet spot" in the shroud opening. Allow 1" clearance to the fan shroud opening, and observe the other minimum clearances as shown above.

Fan Positioning Guidelines

For stock engine set-ups, refer to the Application Guide for size of spacers required. For engine swaps, check the clearances in your engine compartment and select the spacer(s) you need accordingly. Multiple spacers may be used, **up to a maximum of 3"**.

Spacers & Adapters

Fan Spacers only



Mill Finish • standard 5/8" pilot

Spacer Adapters



Spacer Adapters convert a variety of Hub Pilot Diameters to a standard 5/8" pilot, and provide the required spacing from the radiator.
Mill Finish

Part# 501, 504, 508, 516

Part#	Thick	Bolt	Mat'l
501	3/32"	1"	Aluminum
504	1/2"	1 1/4"	Aluminum
508	1"	1 3/4"	Aluminum
516*	2"	2 3/4"	Aluminum

*Use #516 when replacing a clutch fan (most applications)

Part# 832, 833, 836, 838, 840, 872

Part#	Thick	Hub Pilot Diameter	Bolt Req'd
832	1/2"	3/4"	1 1/4"
833	1/2"	13/16"	1 1/4"
836	1/2"	1"	1 1/4"
838	1/2"	1 1/8"	1 1/4"
840	1/2"	1 1/4"	1 1/4"
872	1"	3/4"	1 3/4"

Fan Spacer Kits



Includes: Spacer plus 4 ea. screws and washers.

Part# 873, 876, 878, 879, 880, 952, 960

Part#	Thick	Hub Pilot Diameter	Bolt Req'd
873	1"	.860"	1 3/4"
876	1"	1"	1 3/4"
878	1"	1 1/8"	1 3/4"
879	1"	1"	1 3/4"
880	1"	1 1/4"	1 3/4"
952	2"	3/4"	2 3/4"
960	2"	1 1/4"	2 3/4"

Part# 14524, 14528, 14536

Chrysler Part#	Thick	Finish	Bolts
14524	1/2"	Mill	5/16"-18 x 1 1/4"
14528	1"	Mill	5/16"-18 x 1 3/4"
14536	2"	Mill	5/16"-18 x 2 3/4"

Part# 14544, 14548, 14556

Ford,GM, AMC Part#	Thick	Finish	Bolts
14544	1/2"	Mill	5/16"-24 x 1 1/4"
14548	1"	Mill	5/16"-24 x 1 3/4"
14556	2"	Mill	5/16"-24 x 2 3/4"

Part# 814538

Ford & Corvette application with 3/4" hub pilot	Thick	Finish	Bolts
14538	2"	Mill	5/16"-24 x 2 3/4"

*Will not work on newer applications that use metric bolts

⚠ WARNING

Must use Flex-a-lite Spacer or warranty will be voided

Screw-on Spacer/Adapter



This spacer/adapter replaces the fan clutch and hub by simply screwing onto the water pump. The fan bolts directly to the new spacer adapter.

The motion of the fan tightens spacer/adapter and **may require additional spacers, depending on application.**

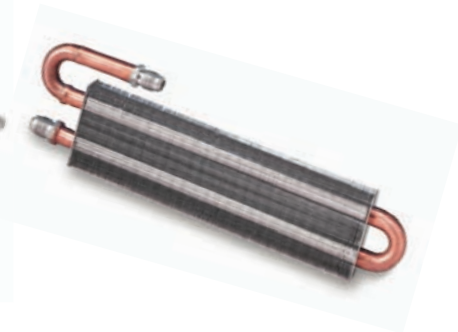
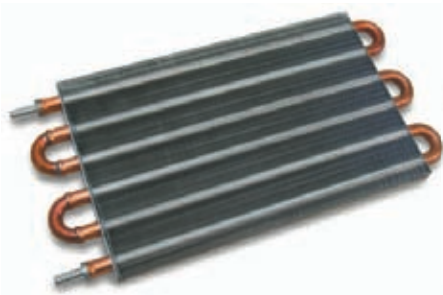
The spacers are 1 1/2" thick.

For Ford, GM and some Chrysler applications.

Part# 851, 852

Part#	Thread Pitch	Thread Direction
851	30mmx1.5	Right Hand rev. rotation
852	30mmx1.5	Left Hand std. rotation

Oil Coolers



Increase your engine's Oil, Fuel & Transmission Cooling

Transmission Oil Coolers provide additional cooling to protect transmission or power steering fluid from overheating:

- Cools transmission or power steering fluid
- 1/2" tube diameter
- Mounts in front of the radiator or A/C condenser

Engine Oil Coolers provide additional cooling to protect engine and transmission from overheating:

- Cools engine , transmission or hydraulic oil
- 1/2" and 5/8" tube diameter
- Mounts in front of the radiator or A/C condenser

Compact Oil Coolers provide additional cooling for fuel, power steering or pre-oiler for turbo:

- Can cool fuel or power steering fluid
- 1/2" tube diameter
- Mounts in frame rail

Remote Oil Coolers provide additional cooling for either transmission, engine or power steering and does not require ram air flow:

- Both transmission and heavy duty oil cooling
- Either 1/2" or 5/8" tube diameter
- Remote mounting wherever space permits

How to choose an Oil Cooler

Cooler dimensions refer to OVERALL size

PART#	HEIGHT	WIDTH	DEPTH	GVW	NOTES
3951	5"	20"	¾"	17,000	engine oil kit
3952	5"	20"	¾"	17,000	engine oil kit
3953	7"	21"	1½"	25,000	engine oil kit
3954	7"	21"	1½"	25,000	engine oil kit
4109	2½"	20"	¾"	9,000	cooler only
4110	5"	12"	¾"	10,000	cooler only
4112	5"	15"	¾"	12,000	cooler only
4116	7½"	12"	¾"	16,000	cooler only
4118	7½"	15"	¾"	18,000	cooler only
4120	7½"	20"	¾"	20,000	cooler only
4126	10"	20"	¾"	26,000	cooler only
4130	2½"	12"	¾"	4,500	cooler only
4136	2½"	12"	¾"	4,500	cooler only
4190	7½"	12"	3⅛"	16,000	includes fan
45201	7"	15"	1½"	20,000	cooler only
45221	7"	18"	1½"	22,000	cooler only
45251	7"	21"	1½"	25,000	cooler only
45261	10½"	15"	1½"	26,000	cooler only
45265	10¾"	15½"	4⅛"	26,000	includes fan
45321	10½"	21"	1½"	32,000	cooler only
45901	10½"	15"	4"	26,000	includes fan
45951	10½"	15"	4¼"	26,000	includes fan - w/thermostat

How to choose a Cooler

If there is no cooler kit recommended for your vehicle in our Application Guide, refer to this section to help choose a cooler.

1. Find a location to mount the cooler and determine how much space is available.
2. Consider the cooling requirement for your application when sizing coolers (see below).
 - Transmission oil coolers are given a GVW rating. Select a cooler based on your vehicle's GVW rating. Select a larger cooler for heavy towing/racing applications where greater cooling capacity is necessary.
 - A standard 4-pass engine oil cooler is adequate for most large-displacement V8 engines. For larger engines or high-horsepower, severe duty applications where more heat is produced, select a larger cooler.
 - Consider a remote-mount cooler-fan combo unit when the cooler can't be mounted to the radiator, or when airflow past the radiator is not adequate for cooling (ex. Low speed off-roading).
3. Determine which cooler fittings are appropriate for your application. In addition to the standard fittings, many Flex-a-lite coolers may be purchased with alternate fittings as a special order.
4. Determine any additional fittings and adapters that may be required to complete your installation, and have these on hand.

Oil Coolers

Engine Oil Coolers



Part# 3951, 3952		
PART	OVERALL DIMS	GVW
3951	5" x 20" x 3/4"	17,000
3952	5" x 20" x 3/4"	17,000

For moderate or auxiliary engine oil cooling applications on vehicles with spin-on filters.

Includes 4' of hose

Hose fittings: 1/2" barb - Tube dia: 1/2"

#3951 For filters with threads: 3/4", 13/16"; 18mm, 20mm, 22mm

#3952 For filters with threads: 13/16" Chevy V8 with recessed filters (except 5.3L)

Typical application:

Acura*, AMC, BMW, Buick, Chevy (excluding recessed filter V8), Chrysler, Dodge, Ford, Honda*, Isuzu, Jeep, Lexus, Lincoln/Mercury, Mazda, Mitsubishi, Nissan, Porsche, Oldsmobile, Pontiac, Saab, Saturn, Range Rover, Toyota, Volkswagen, Volvo

*Honda and Acura may require an aftermarket oil filter.

Engine Oil Coolers



Part# 3953, 3954		
PART	OVERALL DIMS	GVW
3953	7" x 21" x 1 1/2"	25,000
3954	7" x 21" x 1 1/2"	25,000

For high-demand engine oil cooling applications on vehicles with spin-on filters.

Includes 4' of hose

Hose fittings: 1/2" barb - Tube dia: 5/8"

#3953 For filters with threads: 3/4", 13/16"; 18mm, 20mm, 22mm

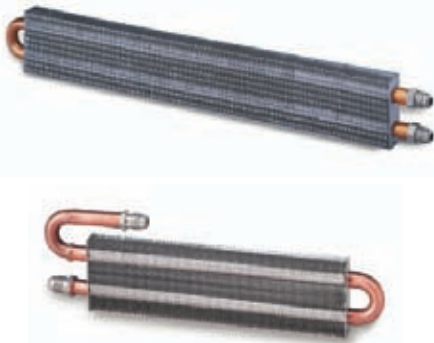
#3954 For filters with threads: 13/16" Chevy V8 with recessed filters

Typical application:

Acura*, AMC, BMW, Buick, Chevy (exc. recessed filter V8), Chrysler, Dodge, Ford, Honda*, Isuzu, Jeep, Lexus, Lincoln/Mercury, Mazda, Mitsubishi, Nissan, Porsche, Oldsmobile, Pontiac, Saab, Saturn, Range Rover, Toyota, Volkswagen, Volvo

*Honda and Acura may require an aftermarket oil filter.

Compact Coolers



Part# 4109, 4130, 4136		
PART	OVERALL DIMS	GVW
4109	2 1/2" x 20" x 3/4"	9,000
4130	2 1/2" x 12" x 3/4"	4,500
4136	2 1/2" x 12" x 3/4"	4,500

General Purpose: for fuel, turbo bearings, differential, etc. Great for cramped spaces.

Supplied with GatorClips®

Hose fittings: #6AN - Tube dia: 1/2"

#4109 Transmission oil cooler for frame rail mounting or severely limited spaces
NOT FOR ENGINE OIL COOLING

#41091 is 3/8" BARB

Compact coolers can be used as a pre-oiler for TURBO applications

TransLife® Transmission Oil Cooler Kits



Part# 4116C
'10-'11 Camaro Automatic
Transmission Cooler Kit



Part# 4110, 4112, 4116, 4116C, 4118, 4120, 4126		
PART	OVERALL DIMS	GVW
4110	5" x 12" x 3/4"	10,000
4112	5" x 15" x 3/4"	12,000
4116	7 1/2" x 12" x 3/4"	16,000
4116C	7 1/2" x 12" x 3/4"	16,000
4118	7 1/2" x 15" x 3/4"	18,000
4120	7 1/2" x 20" x 3/4"	20,000
4126	10" x 20" x 3/4"	26,000

Primary or auxiliary transmission oil cooling. Select cooler size based on temperature, available space or GVW, where applicable.

Includes 4' of hose - except 6AN fitting version

Hose fittings: 3/8" barb - Tube dia: 1/2"

For 6AN fittings add "-6" to the end of the Translife part numbers

Can be ordered with alternate fittings as a special order

* Coolers with 6AN fittings do not come with oil hose.

Heavy Duty Coolers

Remote Transmission Oil Cooler



Part# 4190

PART	OVERALL DIMS	CFM	GVW
4190	7½" X 12" X 3⅛"	300	16,000

Provides transmission oil cooling where free air flow is not available.

Includes 4' of hose - except 6AN fitting version

Hose fittings: ⅝" barb - Tube dia: ½"

For 6AN fittings add "-6" to the end of the Translife part numbers

Can be ordered with alternate fittings as a special order

Heavy Duty Coolers



Part# 45201, 45221, 45251, 45261, 45321

PART	OVERALL DIMS	GVW
45201	7" x 15" x 1½"	20,000
45221	7" x 18" x 1½"	22,000
45251	7" x 21" x 1½"	25,000
45261	10½" x 15" x 1½"	26,000
45321	10½" x 21" x 1½"	32,000

Primary or auxiliary transmission or engine oil cooling. Select cooler size based on temperature, available space or GVW, where applicable.

Includes 4' of hose

Hose fittings: ½" female NPT - Tube dia: ⅝"

Can be ordered with alternate fittings as a special order

Heavy Duty Remote Oil Cooler



Part# 45901

PART	OVERALL DIMS	CFM	GVW
45901	10½" x 15" x 4"	800	26,000

Provides engine oil cooling where free air flow is not available.

Includes 4' of hose

Hose fittings: ½" female NPT - Tube dia: ⅝"

Can be ordered with alternate fittings as a special order

Includes Gator Clips

Shrouded Heavy Duty Remote Oil Coolers



Part# 45265 w/ M50 fan

PART	OVERALL DIMS	CFM	GVW
45265	10¾" x 15½" x 4⅞"	850	26,000

Primary or auxiliary transmission or engine oil cooling.

Includes 4' of hose

Hose fittings: ½" female NPT - Tube dia: ⅝"

Can be ordered with alternate fittings as a special order

Built-in mounting flanges



Part# 45951

PART	OVERALL DIMS	CFM	GVW
45951	10½" x 15" x 4½"	800	26,000

Primary or auxiliary transmission or engine oil cooling. Built-in electronic thermostat.

Includes 4' of hose

Hose fittings: ½" female NPT - Tube dia: ⅝"

Can be ordered with alternate fittings as a special order

Heavy Duty Cooler Edge Protectors



NEW

Part# 3980, 3981, 3982

PART	OVERALL DIMS	CFM	GVW
3980	11⅞" x 1½" x ¼"	45201, 45261, 45265, 45901	aluminum
3981	14⅞" x 1½" x ¼"	45221	aluminum
3982	17⅞" x 1½" x ¼"	45251, 45321	aluminum

Protects sides of fins from damage due to road debris

Gives cooler a custom finished look.

Mojave Heater and Plenum



Mojave Heater

The Mojave heater makes the job of fitting (or refitting) your ride with cabin heat easy and affordable.

- No need to locate hard-to-find O.E. heater parts
- No expensive rebuilds to get old units into working order.
- Update a vehicle without a heater system.
- Uses heat from the hot water in your vehicle's cooling system.

Part# 640 heater	
Heat Output	12,000 BTU
Motor Speeds	3
Amp Draw	6
Weight	6 lbs.
Dimensions	10 $\frac{1}{8}$ "w x 5"h x 9"d

Mojave Plenum

The Mojave plenum provides directional control of the heated air from the Mojave heater.

A defroster vent connection is located on side of the 650 and the 655 does not have one, allowing for a shorter depth.

Both plenum styles snap onto the face of the Mojave heater to provide directional airflow.

Part# 650, 655 plenum	
Part#	Dimensions
650	8 $\frac{3}{4}$ "w x 4 $\frac{3}{4}$ "h x 4 $\frac{1}{2}$ "d
655	8 $\frac{3}{4}$ "w x 4 $\frac{3}{4}$ "h x 2 $\frac{1}{2}$ "d

Mojave Install Kit

The Mojave install kit provides all of the necessary hardware and wire to install a Mojave Heater.



Part# 660,661,662 install kit	
Part#	Type of Kits
660	Automotive Replacement
661	Automotive Upgrade
662	Utility Vehicle

When your hot rod project, antique truck, Jeep, utility vehicle, etc. needs heat... the Mojave Heater and directional plenum are the ultimate pair for providing cabin heat in tight locations.



Our History



1962
Belt-Driven Fans



1978
Electric Fans



1984
Coolers



2004
Radiators

Flex-a-lite® is Still Makin' It in the USA

In 1962, Eddy Davis founded our company with the original “flex fan” concept, developing the first flexible fan out of hand-cut fiberglass roofing material. The concept was to create a lightweight fan that would flatten out at high engine rpm, reducing the drag or load on the engine, while increasing horsepower.

Eddy's son-in-law, Rainer Willingham invented and patented the first electric fan for Flex-a-lite® in 1978 and led the company from 1991 through 2006. Fifty years later, Eddie Davis's granddaughter, Lisa Chissus leads the company with the same innovative spirit, inventing the now patented Flex-a-fit® radiator sidetank design. That's three generations of innovation at the helm of Flex-a-lite®.

Today, Flex-a-lite® manufactures a full line of belt-driven and electric fans, transmission and oil coolers, Flex-a-fit® aluminum radiators, Mojave auxilliary heaters and related components. Our 75,000 square foot facility includes manufacturing, marketing, engineering, vacuum forming, metal stamping and product testing lab. There's a lot of pride and care that goes into every Flex-a-lite® product.

It is our vision to continue developing performance cooling products that improve vehicle performance. We have more ideas for new products than there's time to develop. But before we make a product, we want to make sure we can offer a true performance cooling solution. We're an original, not a copy-cat. And after we engineer a new product, you can bet that we'll be makin' it in the USA.



STILL MAKIN' IT IN THE USA

5th ANNIVERSARY

Flex-a-lite®

Performance • Cooling • Products

MADE IN
USA



Flex-a-lite®